

NR 20 40 National Roads 2040



TII Roads and Greenways Conference

Sep 2022

NR2040 - National Spatial and Planning Context



Cross-sectoral policy

Transport Investment Framework

Individual Investment Strategies

NR2040 is...

- ✓ **An interpretation of government planning policy**
- ✓ **Framework for investment in the face of social and environmental change**
- ✓ **Communication of TII's strategic perspective, providing guidance to Sponsoring Agencies/ LAs**

NR2040 is not...

- ✗ **A list of national road projects**
- ✗ **A 'Predict and Provide' transport plan**
- ✗ **An internal, operational plan**
- ✗ **A multi annual budget**

Vision And Key Objectives

An evolving sustainable transport system focused on safety, innovation, accessibility, mobility of people, goods, and services

Safe and efficient transport network for transport of people and goods

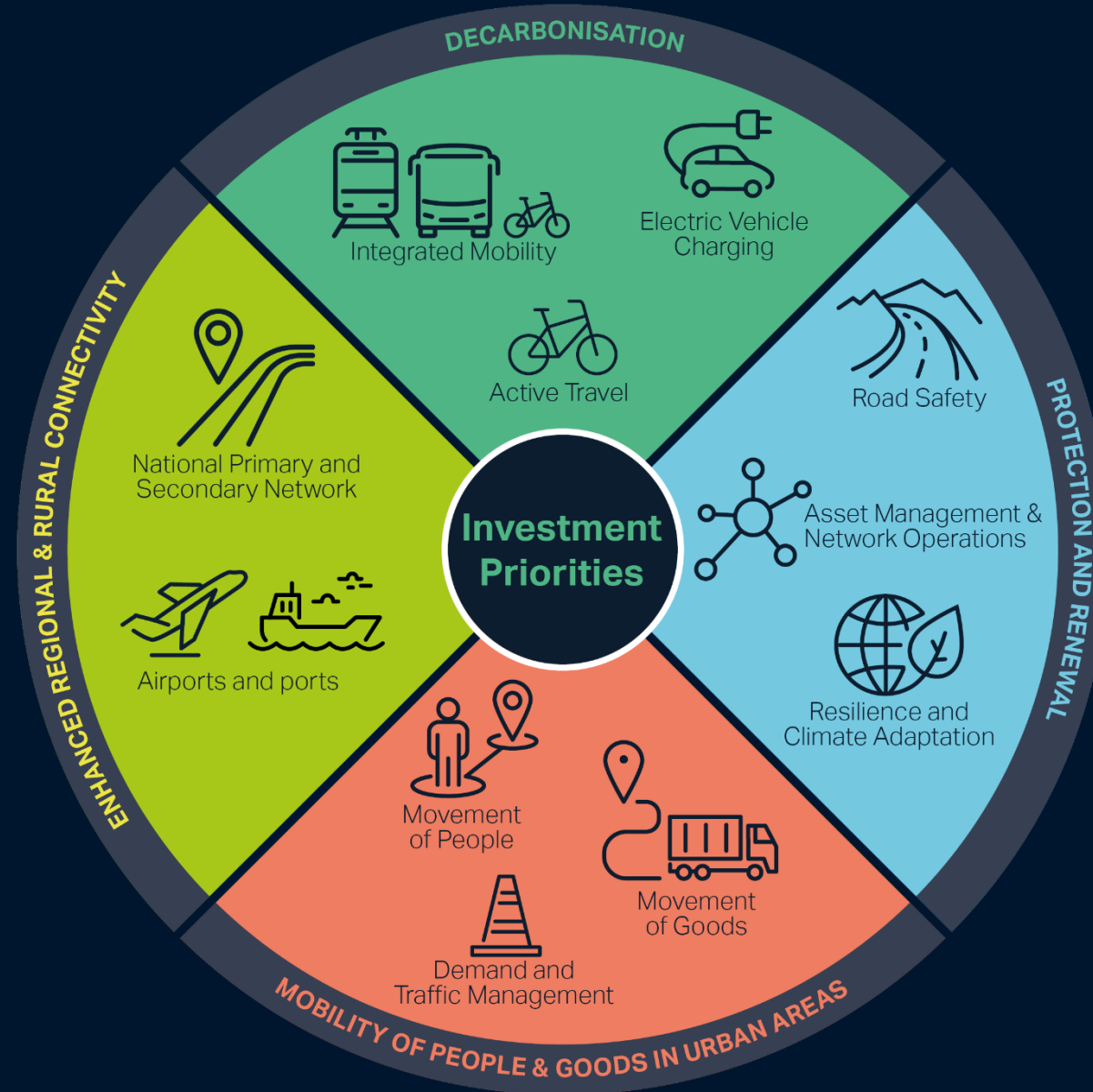
Environmentally, socially, and economically sustainable

Tailored for different customers in different places

Managed and improved as a key public asset

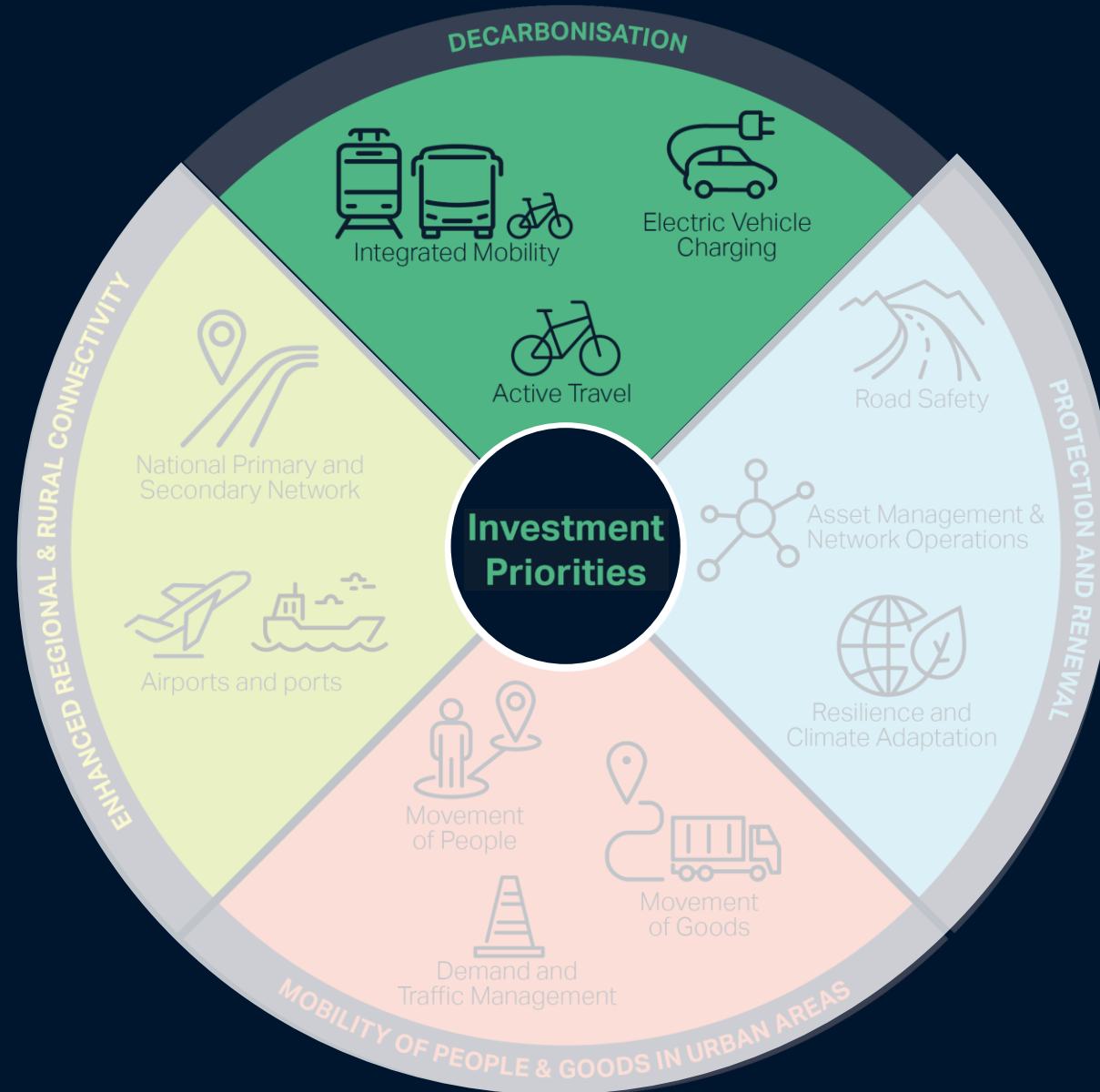
NR2040 Investment Priorities

Align with NIFTI



Investment Priorities And Portfolios

Decarbonisation



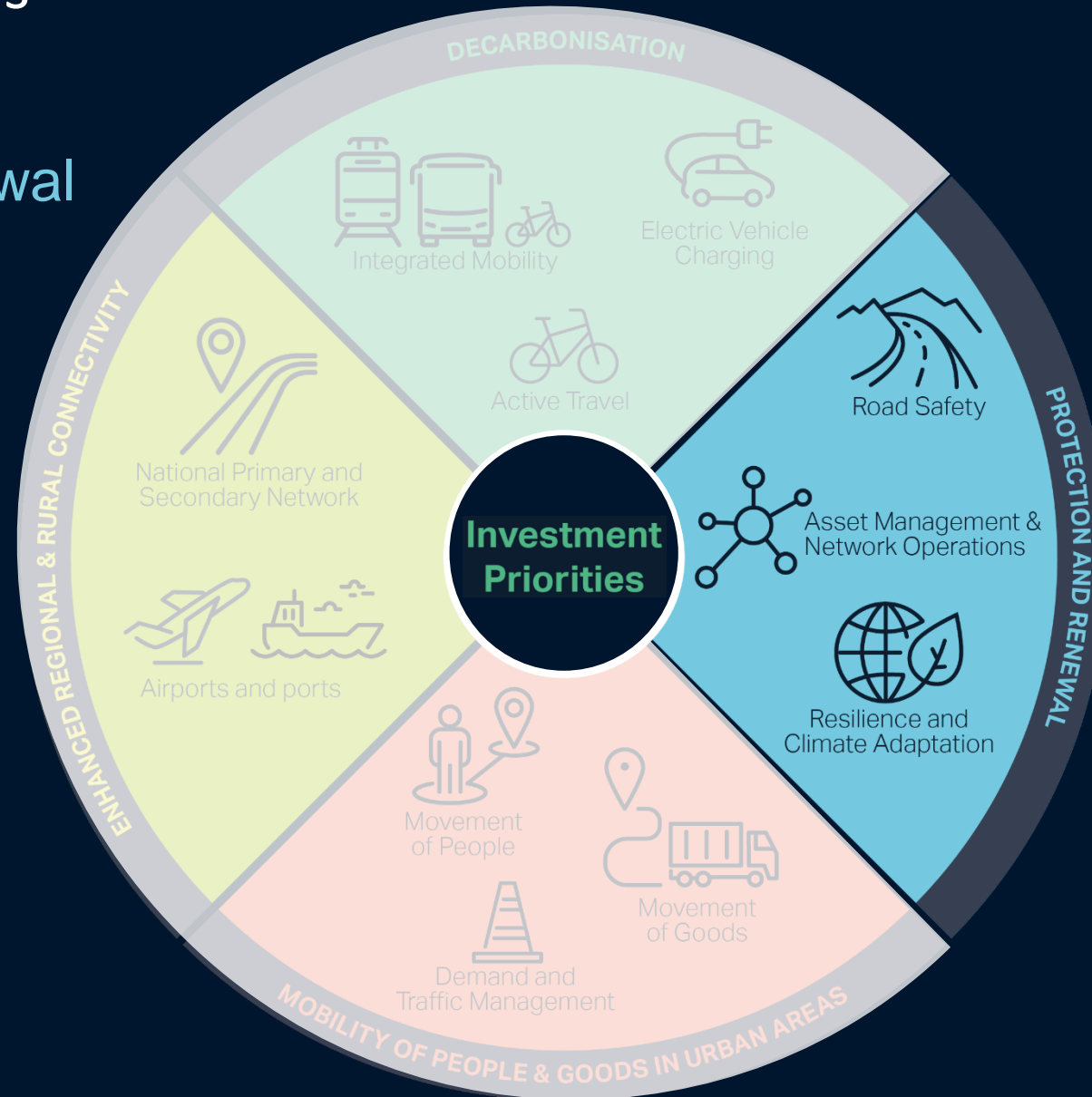
- Park & Ride
- Park & Share
- Multimodal Hubs

- EV Charging Infrastructure

- Improve safety for active travel users
- Reduce severance
- Implement National Cycle Network

Investment Priorities And Portfolios

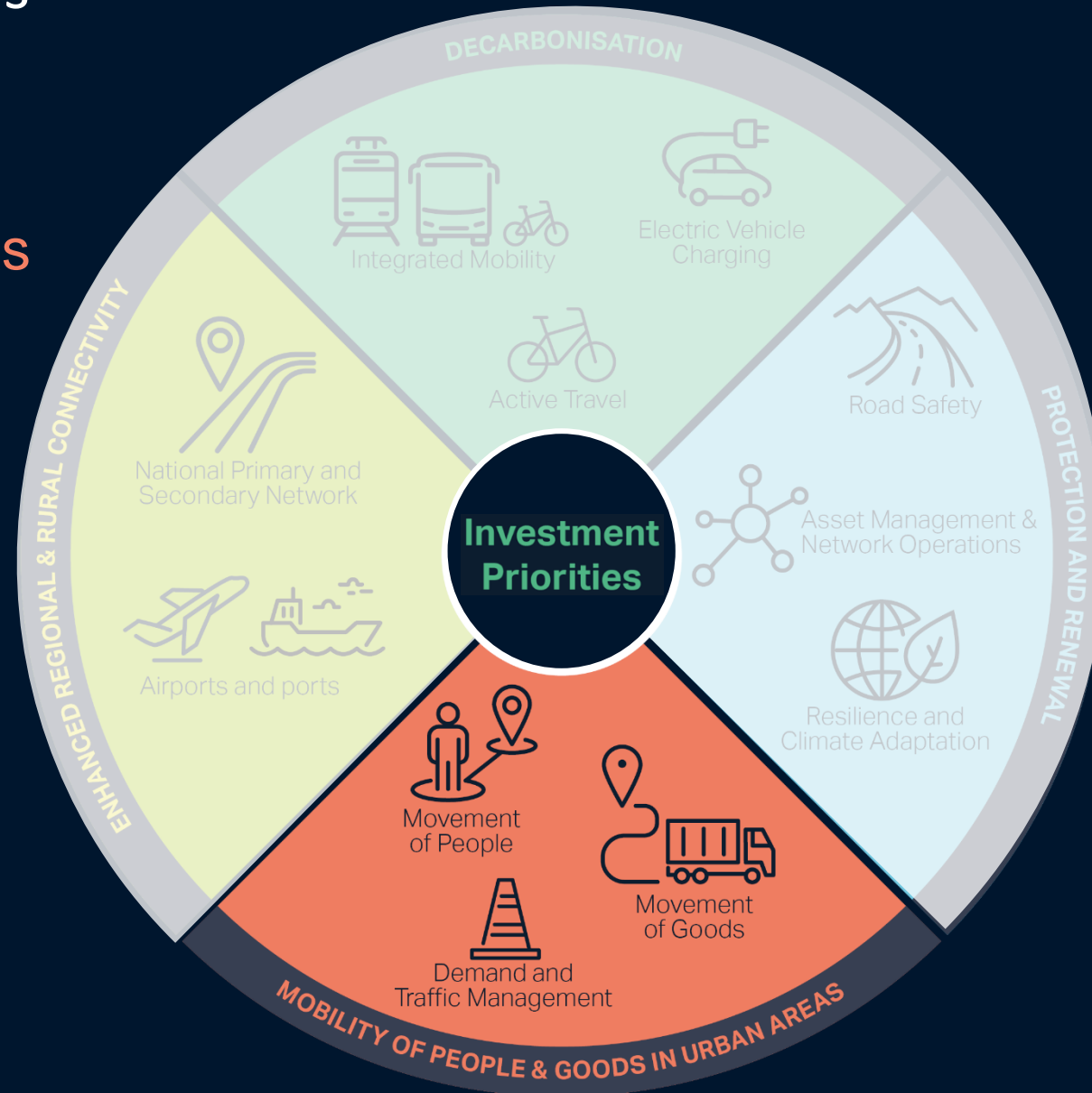
Protection and Renewal



- Road Safety Strategy (2021-2030)
- Safe roadsides
- Maintenance, Protection, and Renewal of existing national roads
- Adaptation to climate change and extreme weather events

Investment Priorities And Portfolios

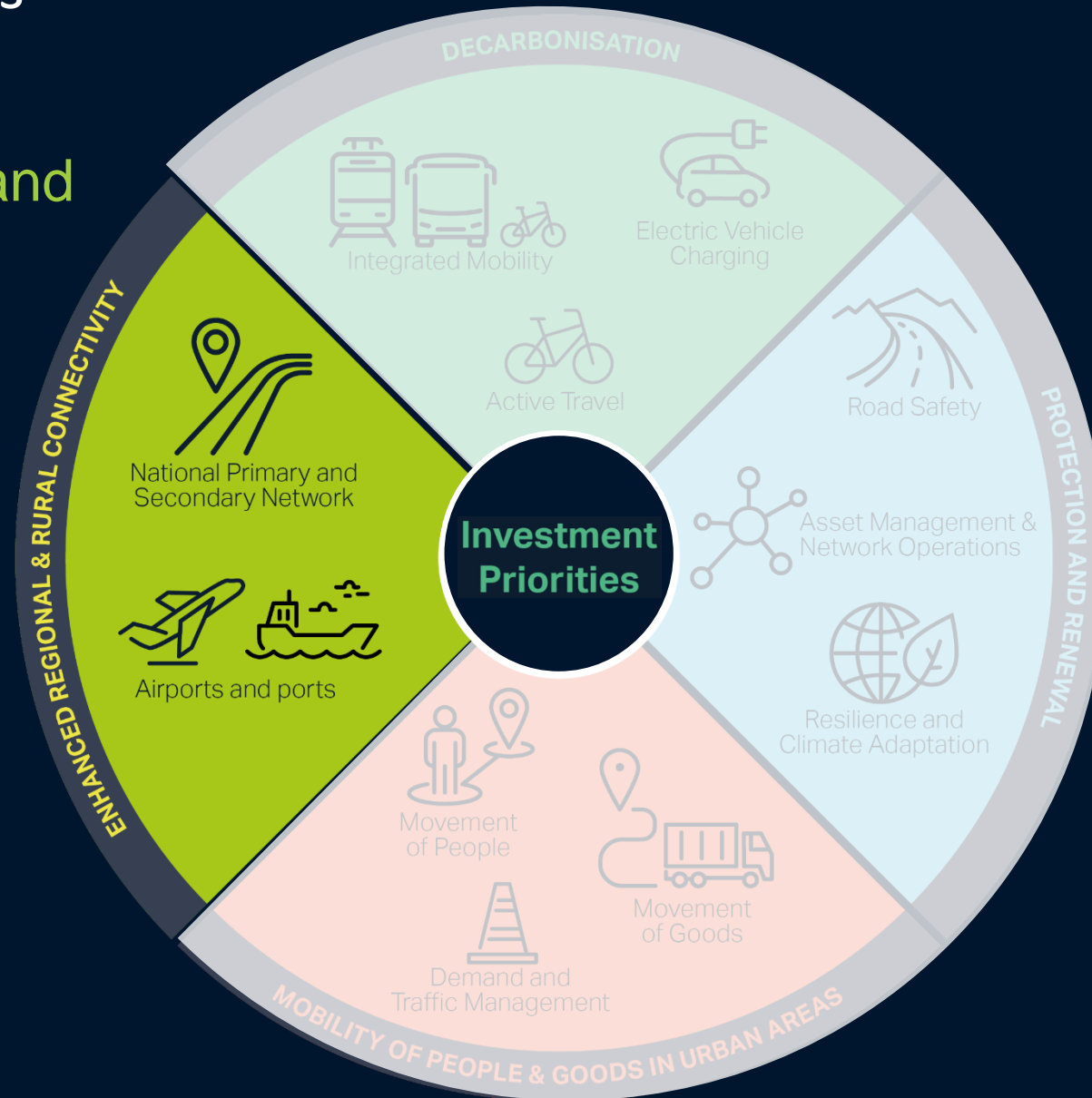
Mobility of People & Goods in Urban Areas



- Prioritised bus lanes
- Segregated cycling/walking facilities
- Implement DoT Strategy for the Haulage Sector*
- Multi-modal distribution centres
- Travel demand management measures

Investment Priorities And Portfolios

Enhanced Regional and Rural Connectivity



National Primary Network

- Inter Urban Connectivity
- Regional Connectivity
- International Connectivity

National Secondary Network

- Lifeline Roads
- Arterial Roads
- Collector Roads

Long Term Strategic Issues for National Roads

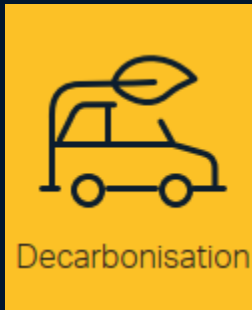


Implementation

TII Commitments*



- TII will continue to analyse possible growth in travel demand, reflecting Project Ireland 2040 population targets



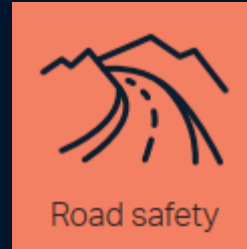
- Appraise National Road projects in the context of compliance with Ireland's climate change targets



- Update and implement TII's Strategy for Adaption to Climate Change



- Promote inter-modal solutions that maximise overall transport efficiency



- Prioritise delivery of forgiving roadsides



- Develop prioritisation measures such as dedicated bus lanes and support NTA's Connecting Ireland Rural Mobility Plan.



- Provide/ consider prioritisation measures such as dedicated freight lanes



- Promote traffic management interventions

*select examples

Implementation

Investment Portfolios

**TII/Sponsoring agencies
required to develop projects/
interventions that
align with NR2040**

**Projects must still
separately comply with Public
Spending Code, CAF etc.**

Investment Priorities and Portfolios				
Decarbonisation	Protection & Renewal	Movement of People & Goods in Urban Areas	Enhanced Regional & Rural Connectivity	
Active Travel Integrated Mobility Electric Vehicle Charging	Network Resilience Safety and Minor Works Asset Management Operations	Traffic and Demand Management » M50 and Dublin Radials » M40 and Cork Area » Dublin Tunnel » Other Urban areas Technology Bypass Development	National Secondary	National Primary
			Interurban Connectivity	
			Arterial Routes Lifeline Routes Collector Routes	Regional Connectivity International Connectivity
		Non Infrastructure Projects		
» Customer engagement and understanding » Sustainability implementation plan		» Innovation and continuous improvement » Digitalisation	» Monitoring and evaluation » Supporting development of a goods distribution centre network	

NR2040 Key Messages

NR2040 is TII's strategy providing a vision for the National Roads network;

- **Identifies the function and investment priorities** for different parts of the National Roads network
- **Provides a means of filtering interventions**
- **Defines TII portfolios and programmes**
- **Provides strategic guidance** to Sponsoring Agencies / Local Authorities



NR2040 Public Consultation

NR2040 Public Consultation

Open until the 14th of October 2022

<https://nr2040.consultation.ai/>

