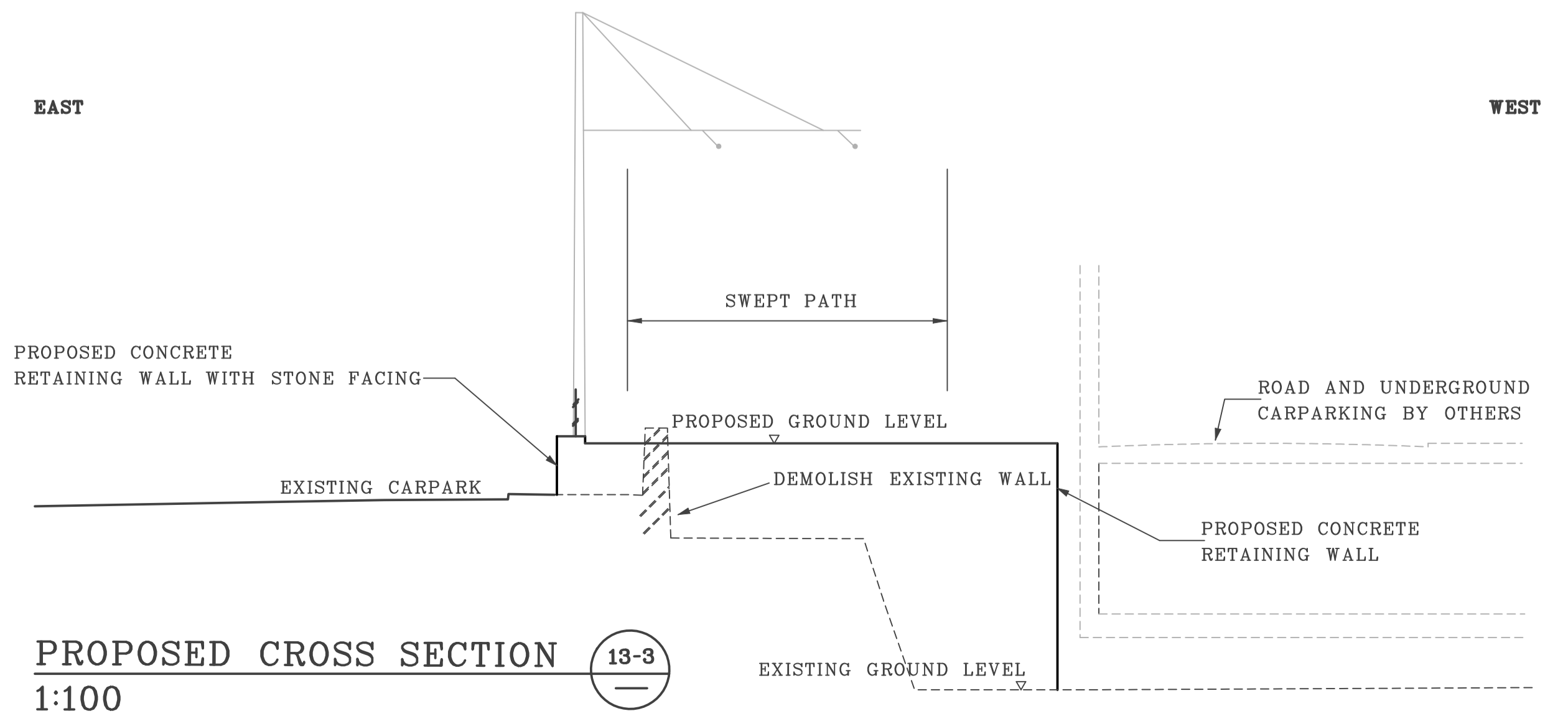


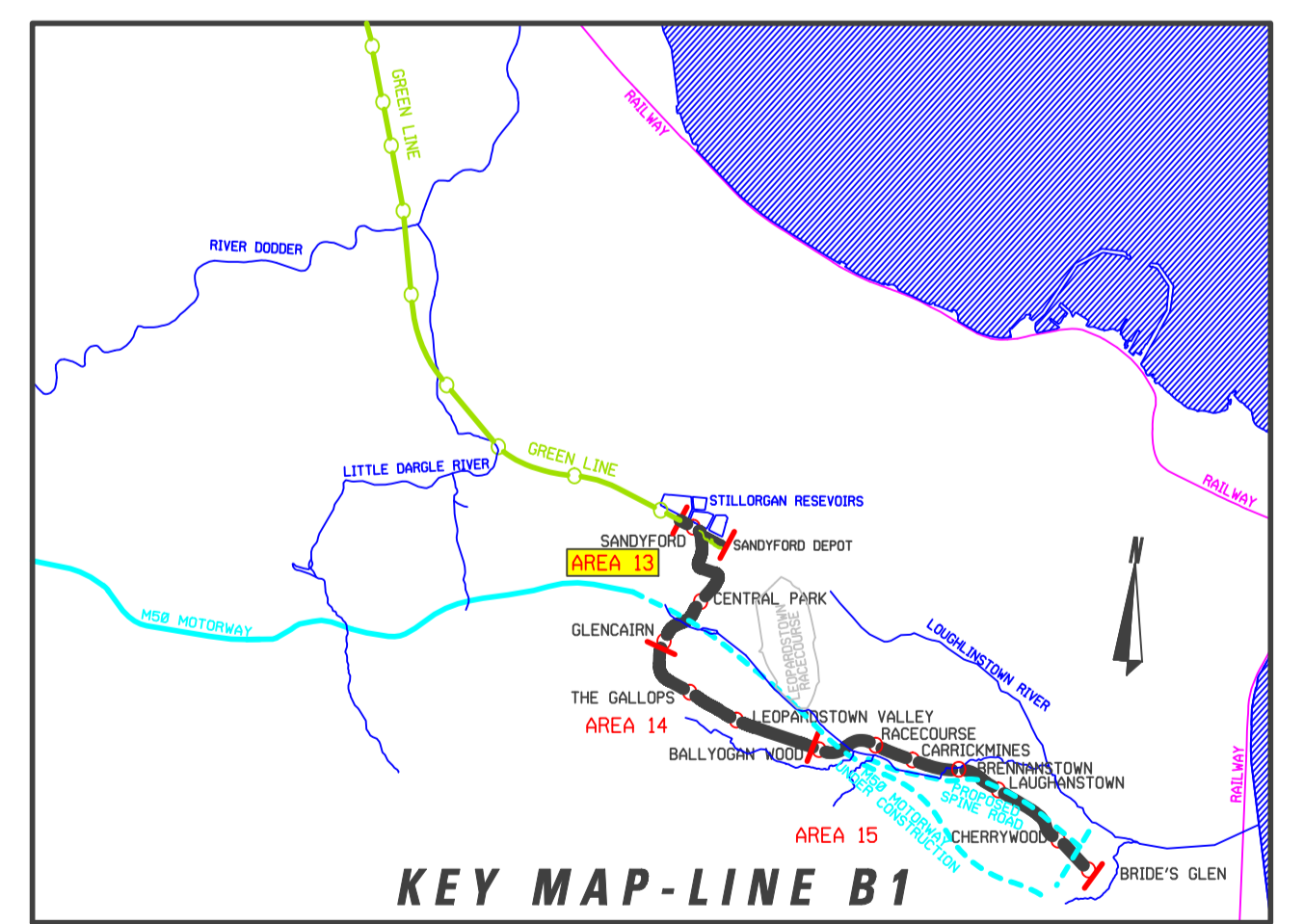
PLAN
Scale 1 : 500



All O.S. data used for plans is generated from O.S digitalised maps and are printed under Ordnance Survey permit no. O.S. 6417

DRAWING LEGEND

- PROPOSED OVER HEAD LINE EQUIPMENT (O.H.L.E.)
- POSITIONS OF POLES AND FIXINGS SUBJECT TO SITE CONDITIONS AND DESIGN DEVELOPMENT
- ANTICIPATED TRAFFIC FLOW
- PROPOSED REMOVAL OF TREES
- EXISTING TREES
- LRT STOP PLATFORM
- NEW EDGE OF TRAFFIC LANE
- EXISTING KERB TO BE REMOVED
- LRT RAIL TRACKS
- EDGE OF SWEEP PATH
- SHARED RUNNING WITH ROAD TRAFFIC (TYPE OF TRAFFIC INDICATED ON DRAWING)
- SEGREGATED RUNNING OR PROTECTED RUNNING
- NEW EDGE OF TRAFFIC LANE



REVISION	DATE	MODIFICATION	STATUS	CHECKED/APPROVED

RPA Railway Procurement Agency

Contractor: **LUAS**
 LUAS
 Parkway Business Centre
 Parkway Street,
 Dublin 6, Ireland
 Phone: +353 1 468 3888
 Fax: +353 1 468 3881
 www.luas.ie

TITLE
LIGHT RAILWAY WORKS
LINE B1 - ALIGNMENT DETAILS
CENTRAL PARK TO S. E. MOTORWAY

PREPARED: RPA OFFICE	CHECKED: HAMID FOROUGHI
SCALE: 1:500 1:1000	APPROVED: PAT O'DONOGHUE
DATE: APRIL 2005	

AREA NO. 13	PLAN NO. B1-RO 13 B-C	SUBJECT: RAIL ORDER
--------------------	------------------------------	----------------------------

INTERNAL DOCUMENT NUMBER	STAGE	LINE	CONTRACT	ELEMENT	DRW NO.	DRW REV.
	L	B1	000	GA	13003	A