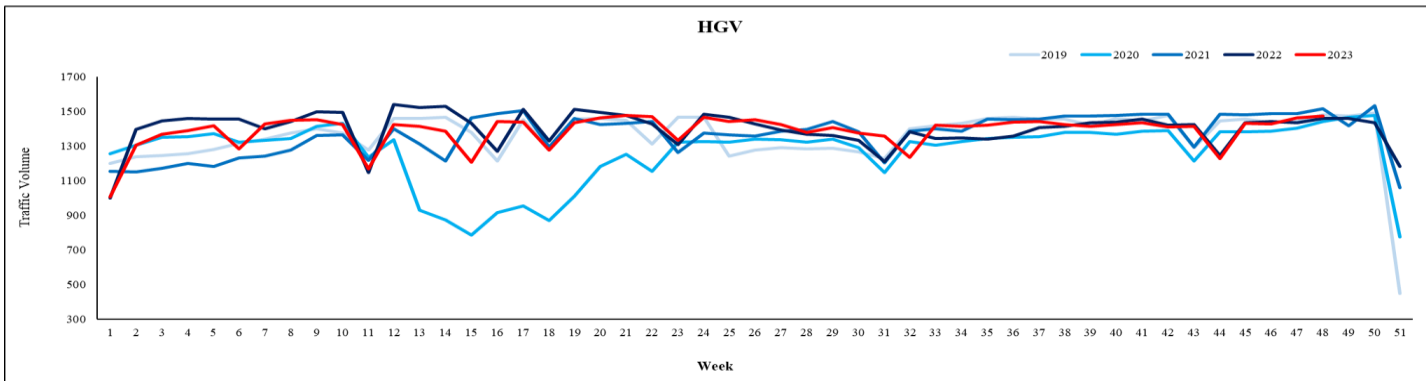
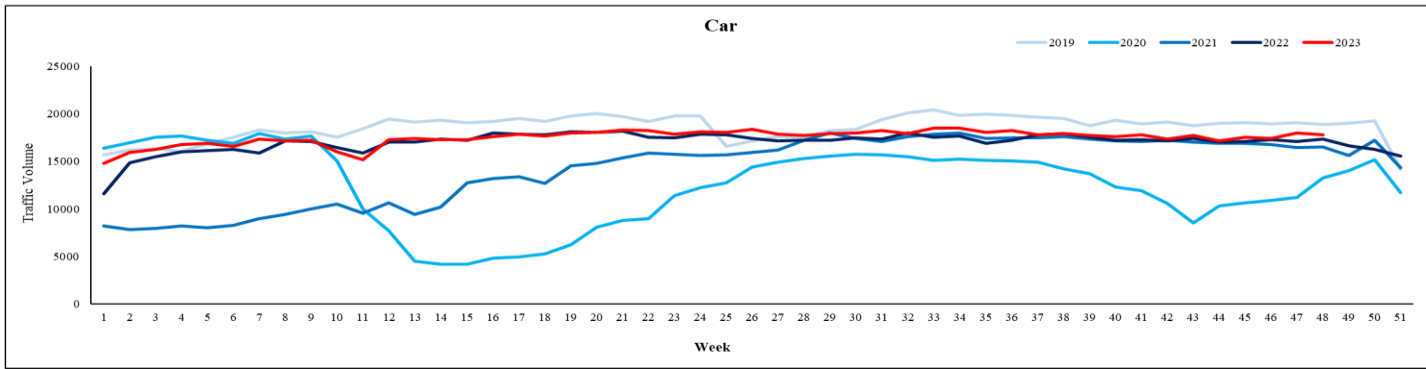
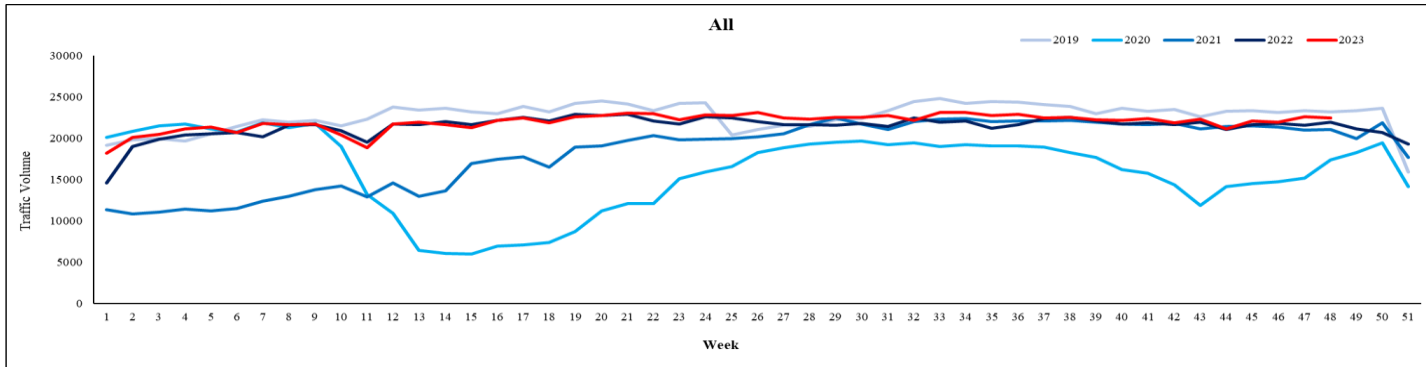


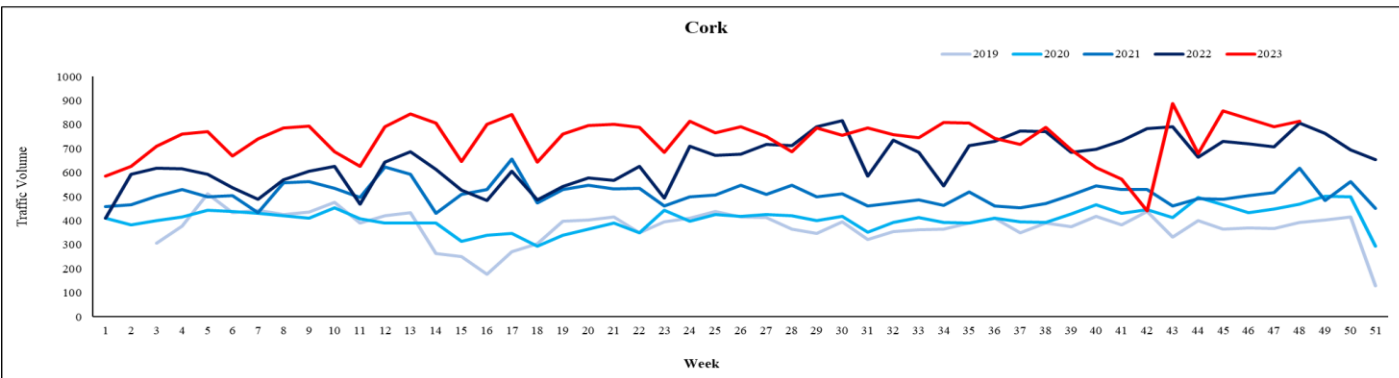
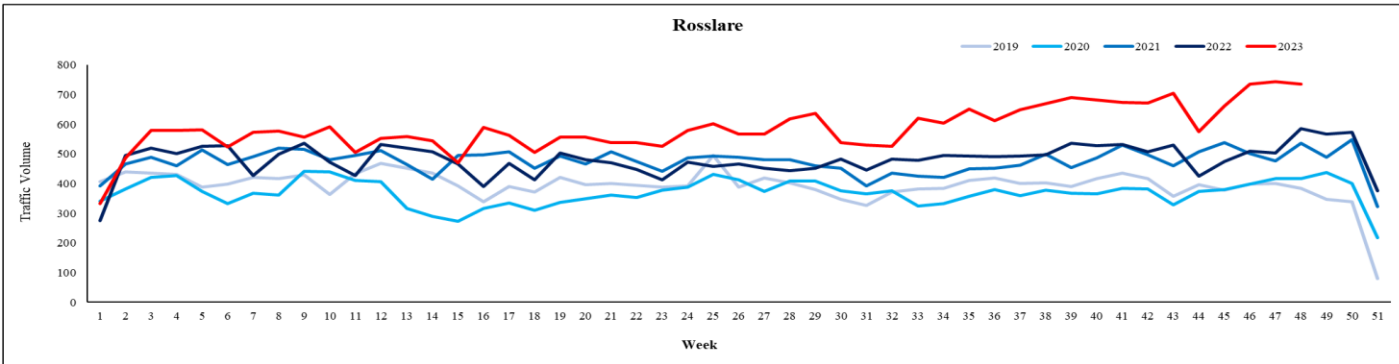
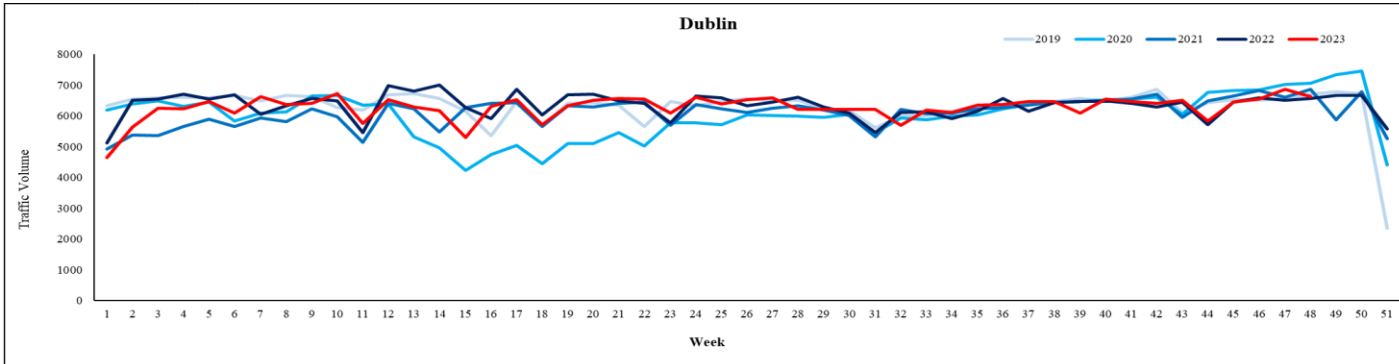
Traffic Dashboard | Comparison 2019 to 2023



	Last week's average traffic volume				
	2023	% change in 2023 relative to			
		2019	2020	2021	2022
All	22,439	-3%	+29%	+7%	+2%
Car	17,792	-6%	+34%	+8%	+3%
HGV	1,473	-0.5%	+2%	-3%	+1%

- These graphs have been prepared using data from all traffic counters installed on the national road network. The 'Traffic Volume' represents the sum of traffic volumes, from all counters, divided by the number of traffic counting sites.
- These graphs represent the average daily traffic volume per week for All traffic (Cars and HGVs) for 2023, 2022, 2021, 2020 and 2019.
- Please note that several traffic counters lost traffic count data between June and August 2019. Consequently, the traffic counts for that period are likely to vary than what is shown on the graphs.
- Up to date daily traffic numbers and trends over the year can be found in the link below (updated daily):
<https://www.tii.ie/roads-tolling/operations-and-maintenance/traffic-count-data/covid-traffic-patterns/>

HGV Port Dashboard | Comparison 2019 to 2023



	Last week's average daily traffic volume				
	2023	% change in 2023 relative to			
		2019	2020	2021	2022
Dublin	6,625	-1%	-6%	-4%	+1%
Rosslare	736	+92%	+76%	+37%	+26%
Cork	814	+107%	+74%	+32%	+1%

- These graphs have been prepared using data from the traffic counters at the ports in Dublin, Rosslare and Cork. The graphs represent the average daily traffic volume per week for articulated HGV traffic for 2023, 2022, 2021, 2020 and 2019.
- Please note that traffic data was not recorded for multiple periods between the 30th September and the 20th October at Cork port counter.
- There was -2.6% decrease in overall articulated HGV flow at the ports last week compared to the previous week.
- At Dublin Port, the shares between inbound and outbound articulated-HGV traffic were 51% and 49% respectively.
- At Rosslare Port, the shares between inbound and outbound articulated-HGV traffic were 49% and 51% respectively.
- At Cork Port, the balance between inbound and outbound articulated-HGV flow is nearly equal.