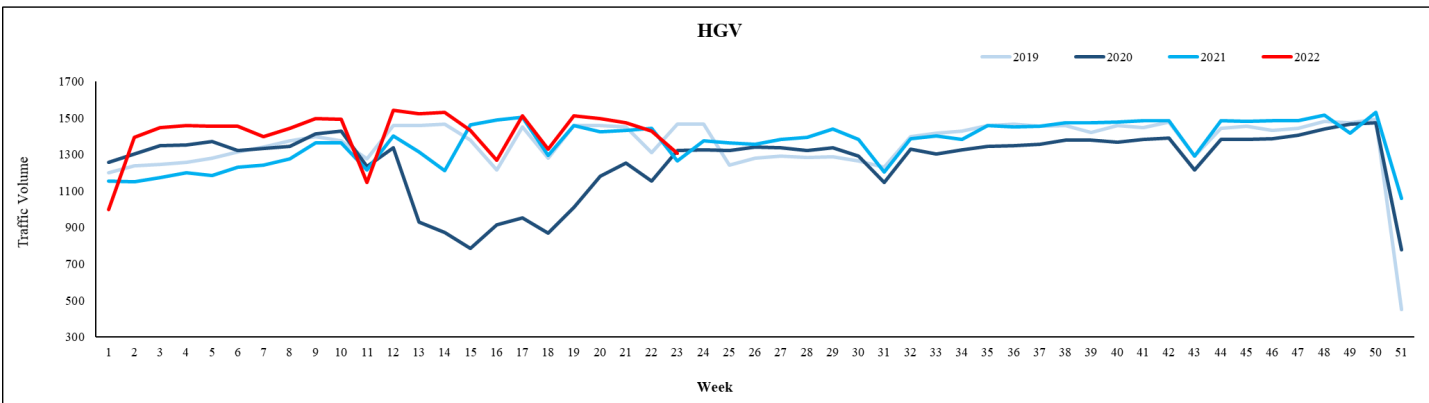
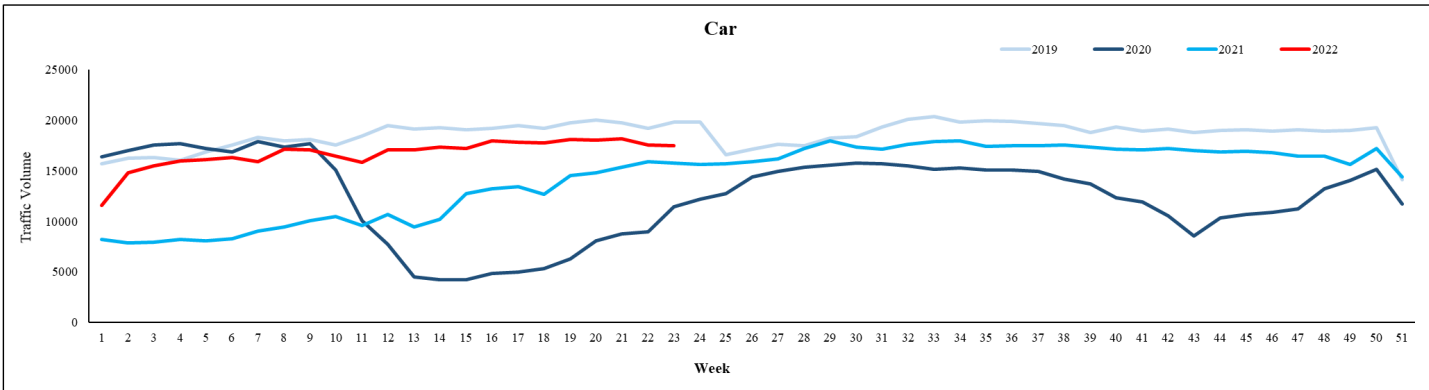
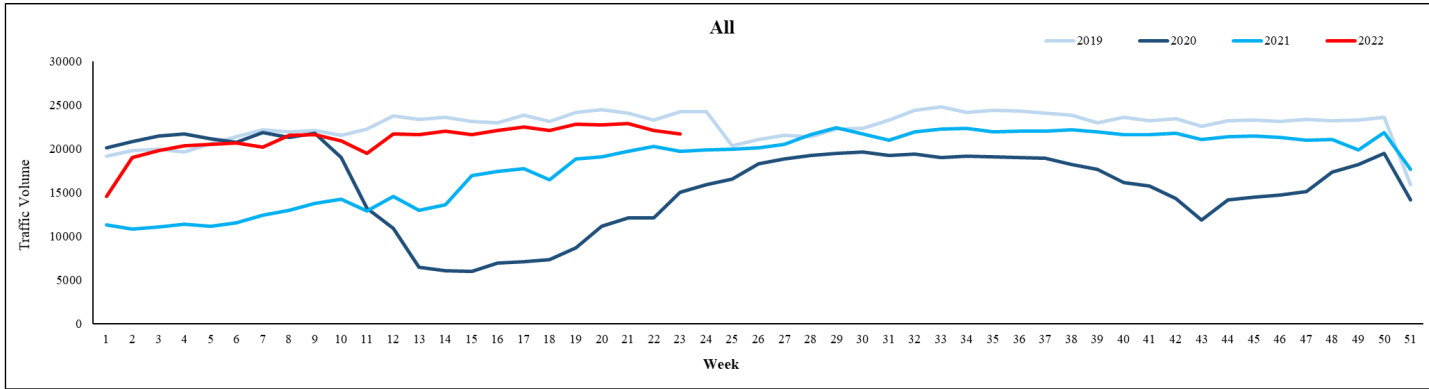


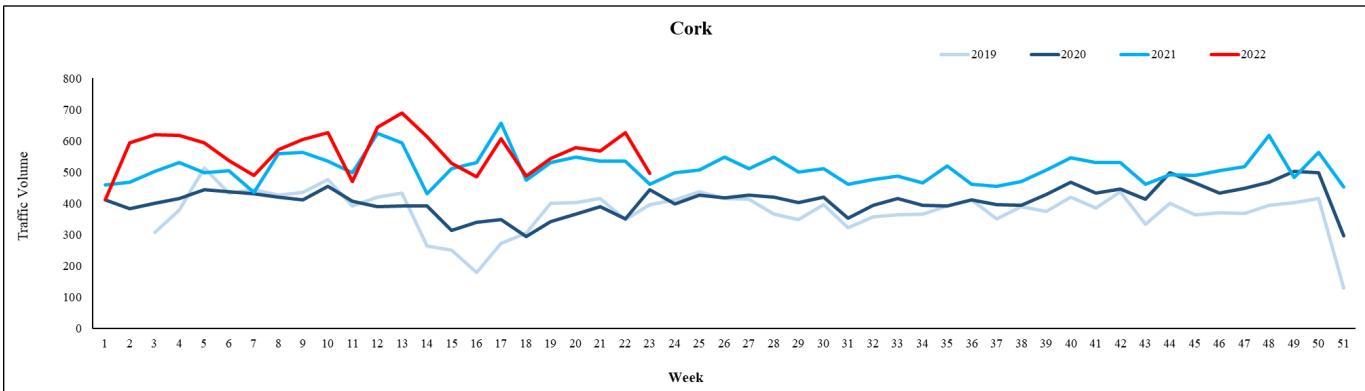
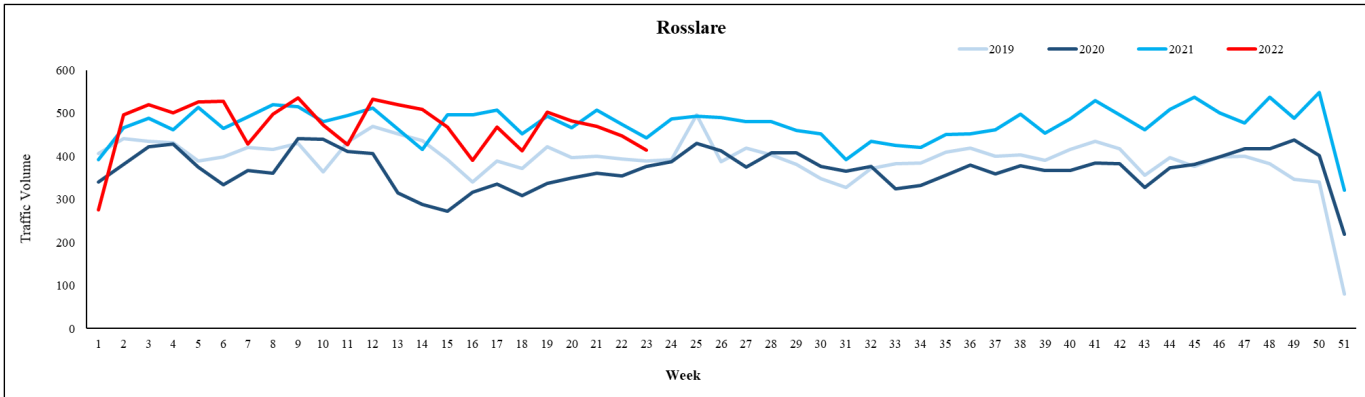
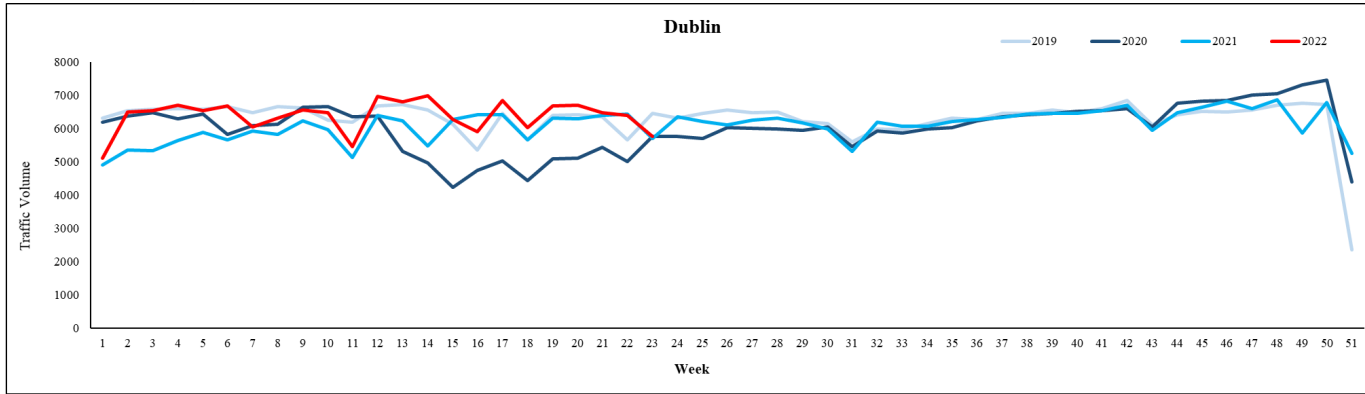
Traffic Dashboard | Comparison 2019 to 2022



| | Last week's average daily traffic volume | | | |
|-----|--|------------------------------|------|------|
| | 2022 | % change in 2022 relative to | | |
| | | 2019 | 2020 | 2021 |
| All | 21,743 | -10% | +44% | +10% |
| Car | 17,458 | -12% | +53% | +11% |
| HGV | 1,307 | -11% | -1% | +3% |

- These graphs have been prepared using data from all traffic counters installed on the national road network. The ‘Traffic Volume’ represents the sum of traffic volumes, from all counters, divided by the number of traffic counting sites.
- These graphs represent the average daily traffic volume per week for All traffic (Cars and HGVs) for 2022, 2021, 2020 and 2019.
- Last week the ‘Average All’ and ‘Average Car’ traffic volumes were below the volumes on the same week in 2019.
- HGV (Rigid and Articulated combined) shows a decrease in volume compared to the volume on the same week in 2019.
- Up to date daily traffic numbers and trends over the year can be found in the link below (updated daily):
<https://www.tii.ie/roads-tolling/operations-and-maintenance/traffic-count-data/covid-traffic-patterns/>

HGV Port Dashboard | Comparison 2019 to 2022



| | Last week's average daily traffic volume | | | |
|----------|--|------------------------------|------|------|
| | 2022 | % change in 2022 relative to | | |
| | | 2019 | 2020 | 2021 |
| Dublin | 5,771 | -11% | 0% | +1% |
| Rosslare | 414 | +6% | +10% | -6% |
| Cork | 496 | +25% | +12% | +7% |

- These graphs have been prepared using data from the traffic counters at the ports in Dublin, Rosslare and Cork. The graphs represent the average daily traffic volume per week for articulated HGV traffic for 2022, 2021, 2020 and 2019.
- There was a -11% decrease in overall articulated HGV flow at the ports last week compared to the previous week.
- The balance between inbound and outbound articulated-HGV flow is nearly equal at the ports in Dublin and Cork.
- At Rosslare Port, the shares between inbound and outbound articulated-HGV traffic were 48% and 52% respectively.