



Comhairle Contae **Lú**
Louth County Council

Your Council

for Your

Community

TII National Roads and
Greenways Conference

M1 Park & Share Pilot Project
Frank Magee

23 rd September 2022



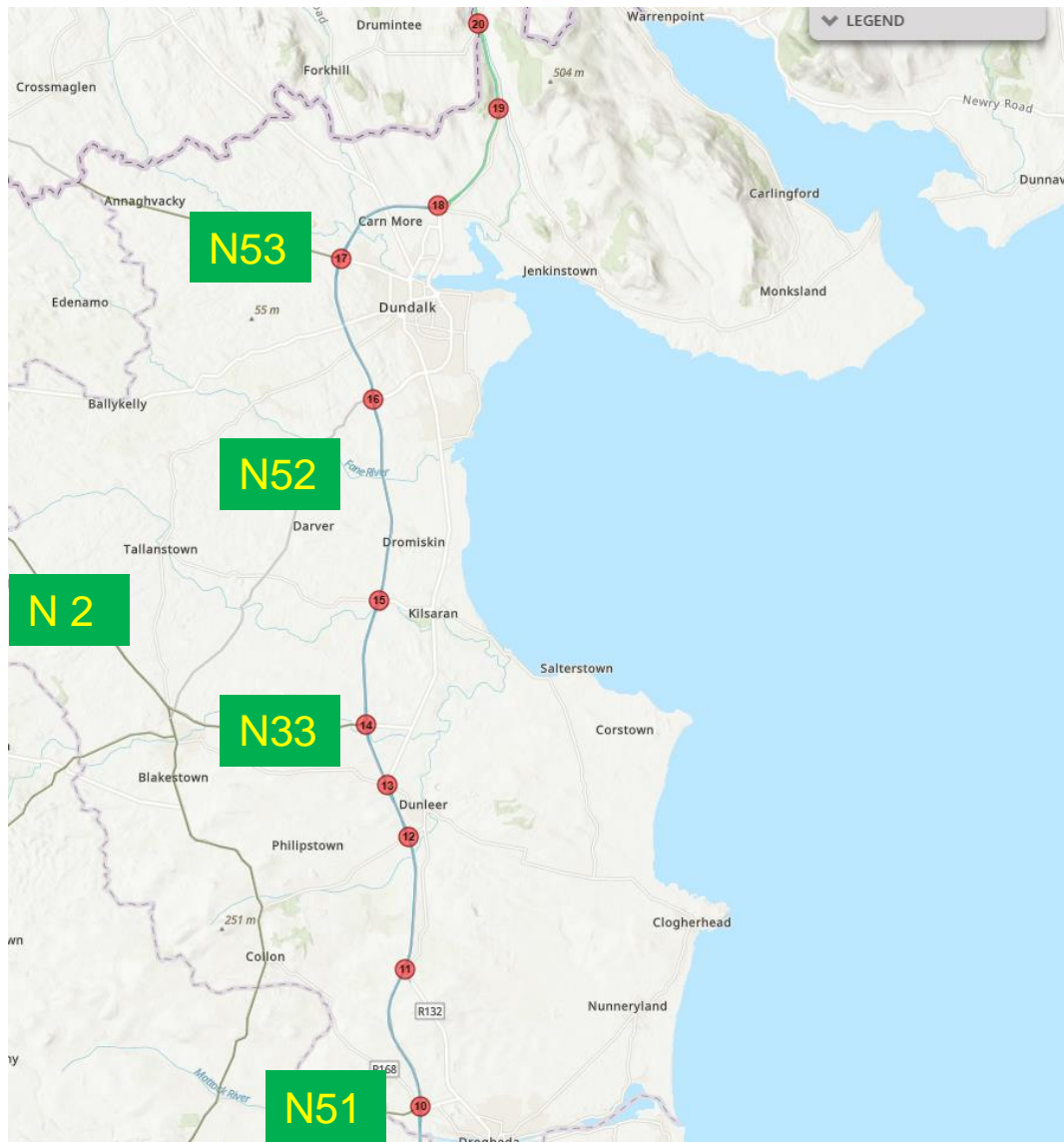
Comhairle Contae **Lú**
Louth County Council

N53 WEST OF J17





M1 JUNCTIONS IN LOUTH



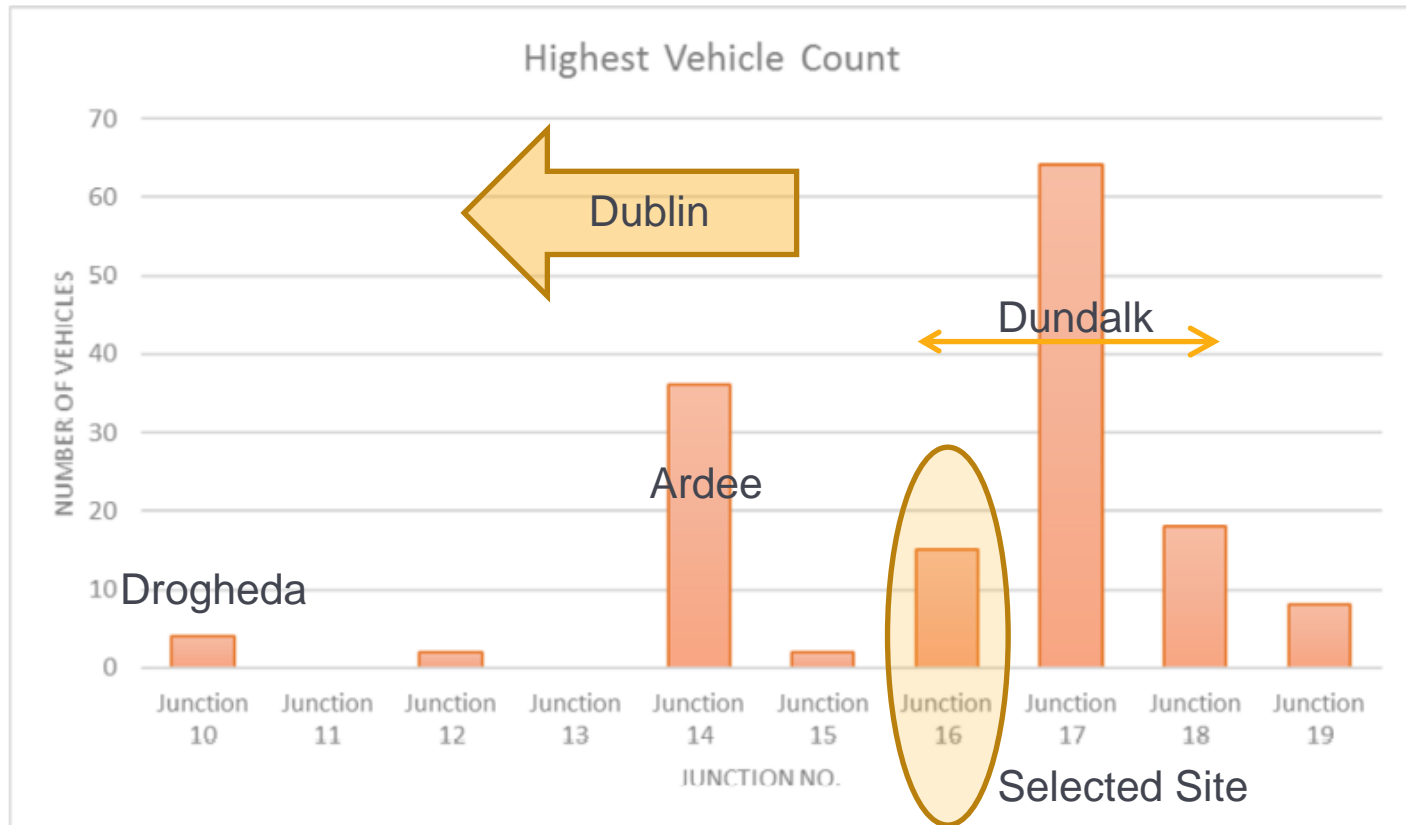
M1/N1 JUNCTIONS

Click on link below to zoom to junction

- [Junction 1 - M50/M1](#)
- [Junction 2 - Dublin Airport](#)
- [Junction 3 - Swords](#)
- [Junction 4 - Donabate](#)
- [Junction 5 - Balbriggan \(South\)](#)
- [Junction 6 - Balbriggan](#)
- [Junction 7 - Julianstown](#)
- [Junction 8 - Duleek](#)
- [Junction 9 - Drogheda](#)
- [Junction 10 - Drogheda \(North\)](#)
- [Junction 11 - Monasterboice](#)
- [Junction 12 - Dunleer](#)
- [Junction 13 - Dunleer \(North\)](#)
- [Junction 14 - Ardee](#)
- [Junction 15 - Castlebellingham](#)
- [Junction 16 - Dundalk \(South\)](#)
- [Junction 17 - Dundalk](#)
- [Junction 18 - Carlingford](#)
- [Junction 19 - Ravensdale](#)
- [Junction 20 - Jonesborough](#)

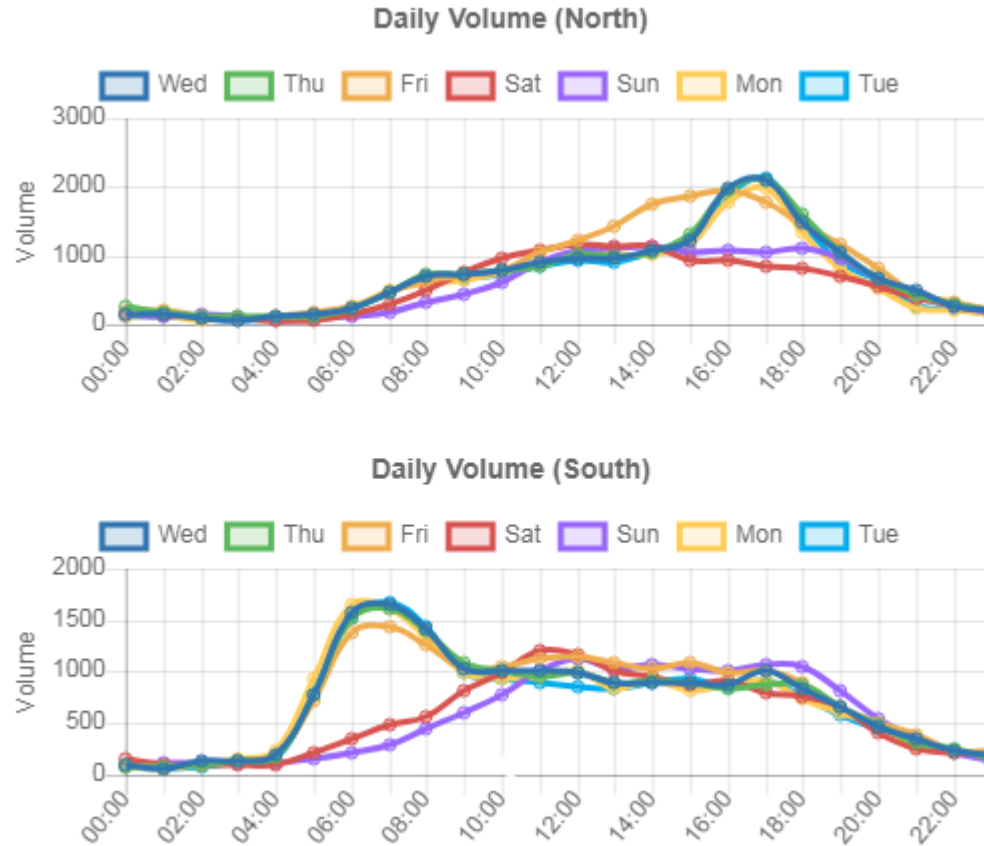


EXTENT OF PARKING AT JUNCTIONS IN LOUTH





M1 TRAFFIC COUNT AT J16



Extract from TII traffic count website dashboard
7 days in August 2022



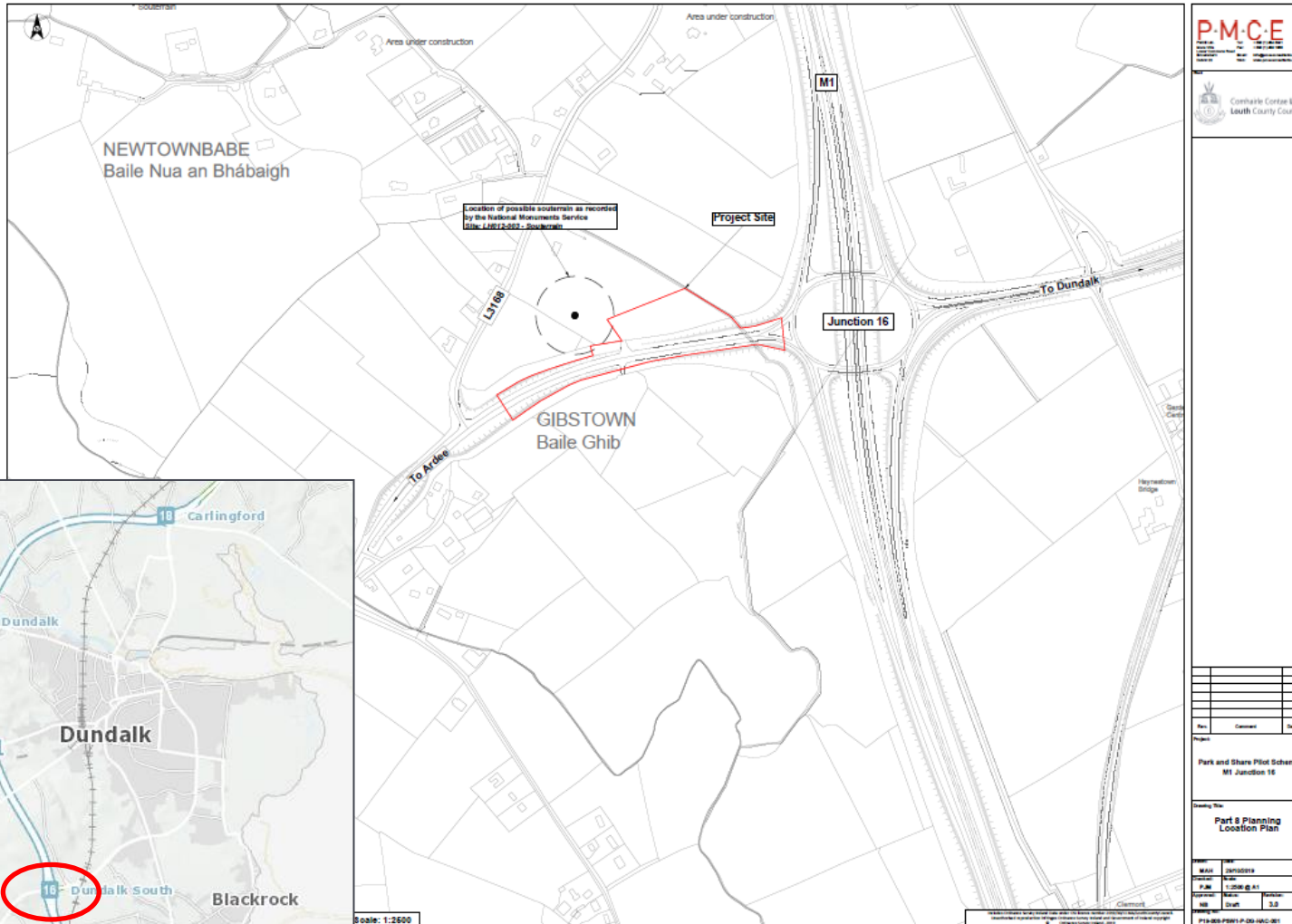
Comhairle Contae **Lú**
Louth County Council

OLD N52 WEST OF J16





SITE LOCATION

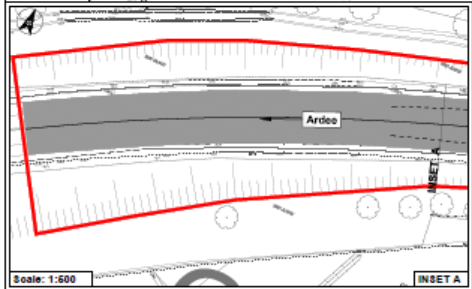




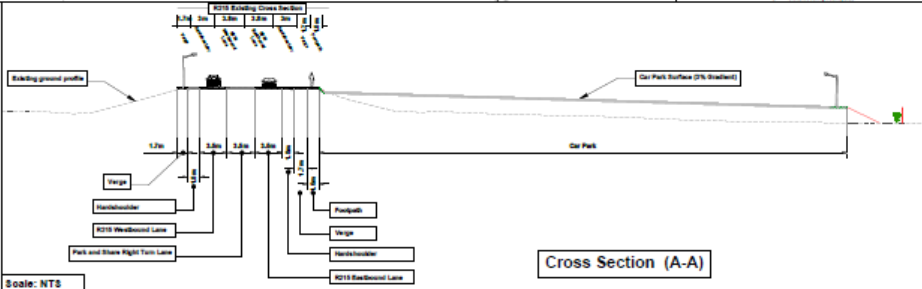
GENERAL LAYOUT DRAWING



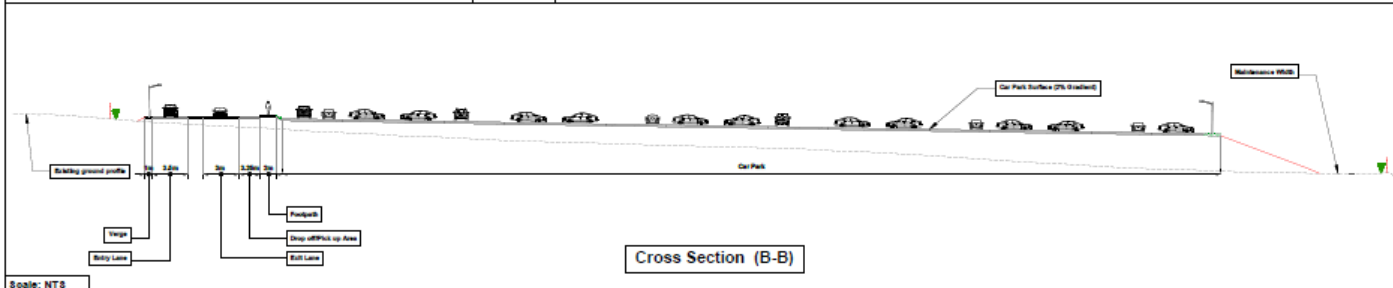
Scale: 1:500



Scale: 1:500



Scale: NTS



Scale: NTS

P.M.C.E

Professional Engineer
No. 123456789
No. 123456789
No. 123456789

Comhairle Contae Lú
Louth County Council

Legend:

- Contiguous/Proposed area
- Scheme area/Proposed site/Proposed
- Traffic Island
- Site Boundary
- Footpath
- Secondary Encouraging Footpath
- Lighting Substation
- Provision for possible future Street Lighting
- Provision for possible future CCTV
- Boundary

Rev.	Comment	Date

Project: **Park and Share Pilot Scheme M1 Junction 16**

Drawing Title: **Part 8 Planning General Layout**

MA01	20/03/2019
Author	
Check	
Drawn	
Scale	1:500 @ A1
Rev.	
Drawn	
Scale	2:0
Project	P18-009 PDR1 P-00-IND-003



SITE FEATURES

- Lighting in operation from dusk to 9pm and 5am to dawn
- Fencing and landscape screening
- 28 day cloud based CCTV storage, ANPR
- EV ducting to all spaces including disabled spaces
- Bus bay provision for extension to Park & Ride
- Cycle stands, height restriction barrier, lockable gate



TIMEFRAME TO DELIVERY

- 2017 HD 17 Road Safety Inspections
- 2017/ 2018 Safety Inspector meetings and concept development
- 2018 Feasibility study and option selection
- 2018 Preliminary Design Report
- 2019 Consultant Appointment, topo, GI, Archaeology GPR and test trenching. Land negotiation.
- 2020 Preliminary design and Part 8
- 2021 Award of contract, 9 month construction



OUTCOMES

- ✓ Parking eliminated at N53 and old N52
- ✓ Parking reduced at J14 (N33) and J18
- ✓ Littering significantly reduced at sites
- ✓ Self regulating - recorded CCTV
- ✓ Support and confidence of site users
- ✓ 1/3 users previously not identified on the network



Comhairle Contae **Lú**
Louth County Council

FUTURE OPTION- CCTV enabled for vehicle recognition monitoring of parking duration



Camera #1

Last update: Oct 21, 2021, 3:18:23 PM

Last detection: Oct 21, 2021, 3:18:18 PM

● Online



Camera #2

Last update: Oct 21, 2021, 3:18:22 PM

Last detection: Oct 21, 2021, 3:18:21 PM



FUTURE OPTION- Mobile app to show availability of spaces via CCTV vehicle recognition





Comhairle Contae **Lú**
Louth County Council







Comhairle Contae Lú
Louth County Council

Thank You


Go raibh maith agat


Contact

1890 202 303
info@louthcoco.ie





Follow us
@louthcoco

County Hall 
Millennium Centre
St Alphonsus Road
Dundalk
A91 KFW6

Townhall
Crowe Street
Dundalk 
County Louth
A91 W20C

Civic Centre
Fair Street
Drogheda 
County Louth
A92 P440

Mid Louth Civic Services Centre 
Fair Green
Ardee 
County Louth
A92 RYT2