

Fig. 13: Archaeology and Cultural Heritage Baseline map - 11.

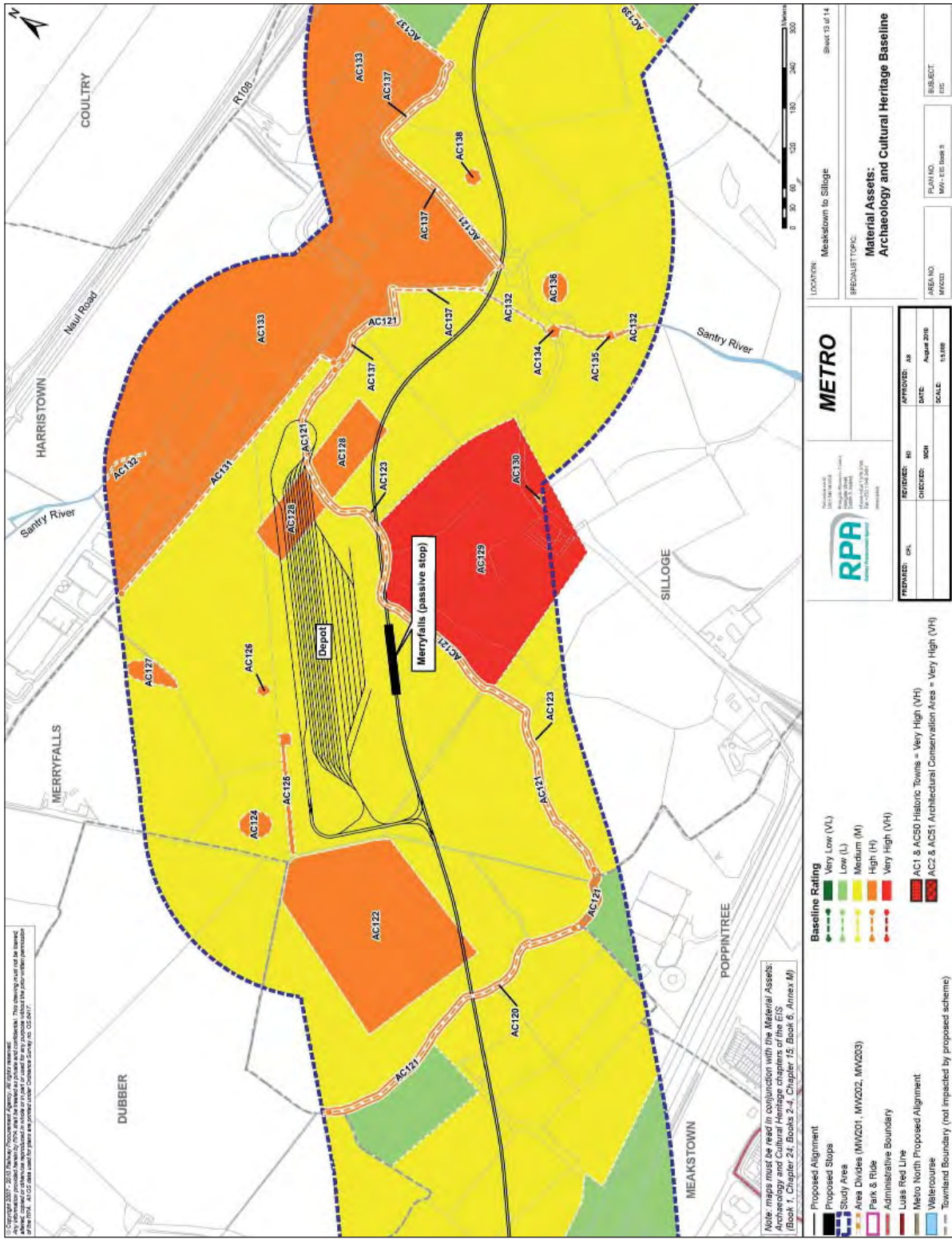


Fig. 15: Archaeology and Cultural Heritage Baseline map-13.

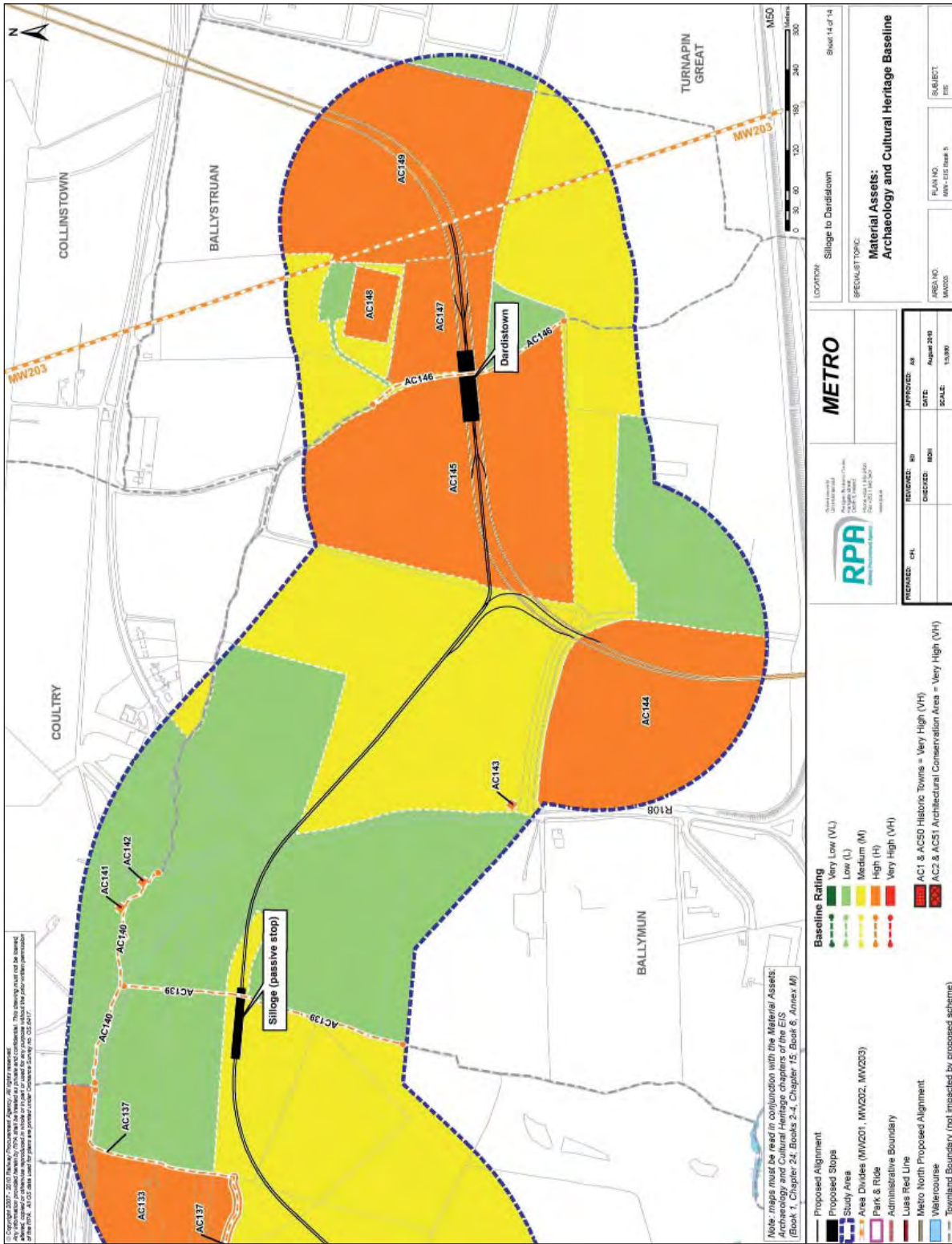
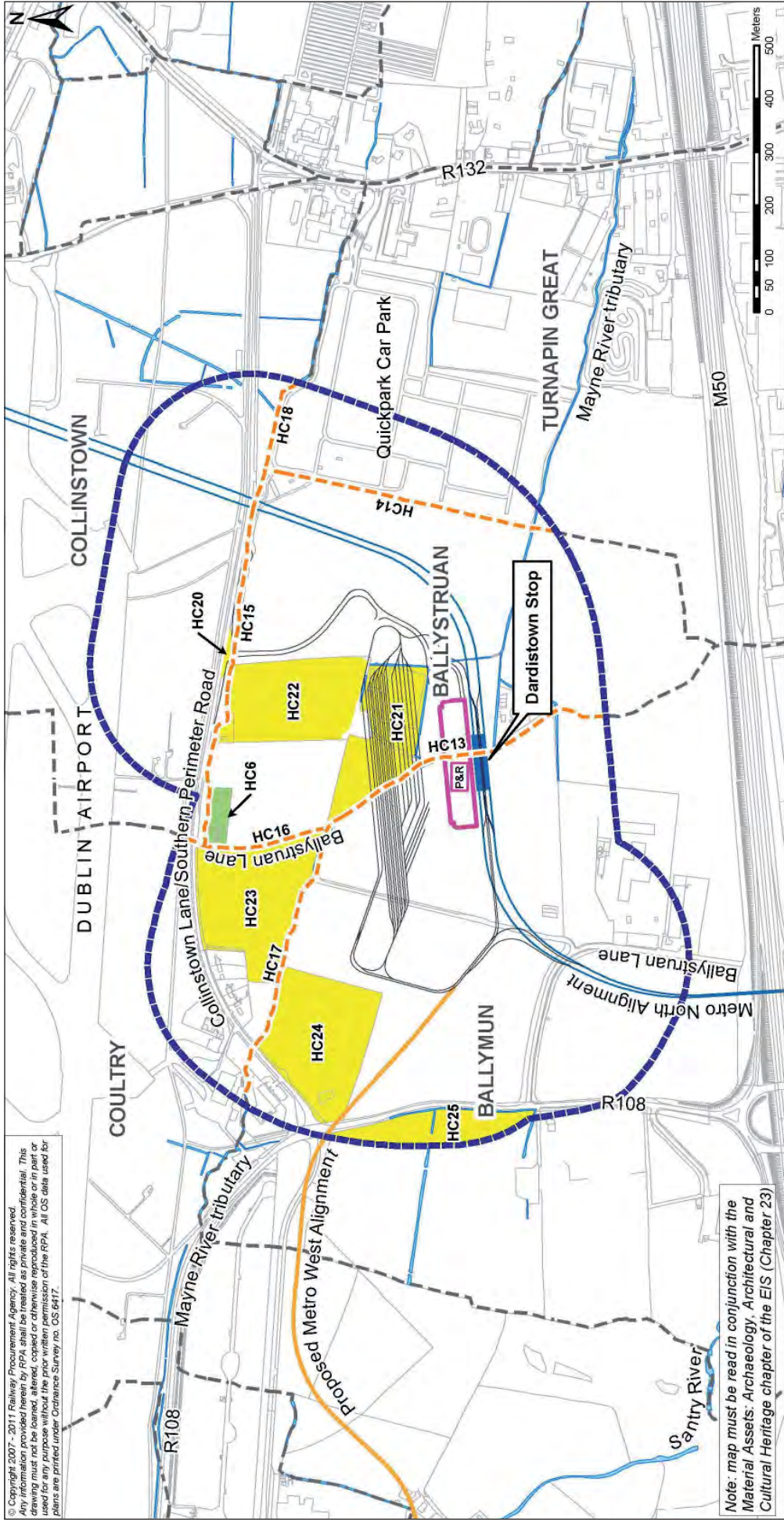


Fig. 16: Archaeology and Cultural Heritage Baseline map-14.



© Copyright 2007 - 2011 Railway Procurement Agency. All rights reserved. Any information provided herein by RPA shall be treated as private and confidential. This drawing must not be loaned, altered, copied or otherwise reproduced in whole or in part or used for any purpose without the prior written permission of the RPA. All OS data used for plans are printed under Ordnance Survey No. OS 6417.

Note: map must be read in conjunction with the Material Assets: Archaeology, Architectural and Cultural Heritage chapter of the EIS (Chapter 23)

- Proposed Metro North Dardistown Depot
 - Granted Metro North Alignment
 - Proposed Metro West Alignment
 - Study Area
 - Park & Ride
 - Waterbody
 - Townland Boundary (outside study area)
- | Boundary | Site | Baseline Rating |
|----------|------|-----------------|
| — | — | Very Low (VL) |
| — | — | Low (L) |
| — | — | Medium (M) |
| — | — | High (H) |
| — | — | Very High (VH) |

METRO

Cherubstreet
 Uilleann Road
 Podagha Business Centre,
 Dublin 18, Ireland.
 Phone: +353 1 562 3420
 Fax: +353 1 562 3421
 www.rpa.ie

PREPARED: CTL	REVIEWED: FS	APPROVED: GF
CHECKED: MCH	DATE: April 2011	
	SCALE: 1:10,000	

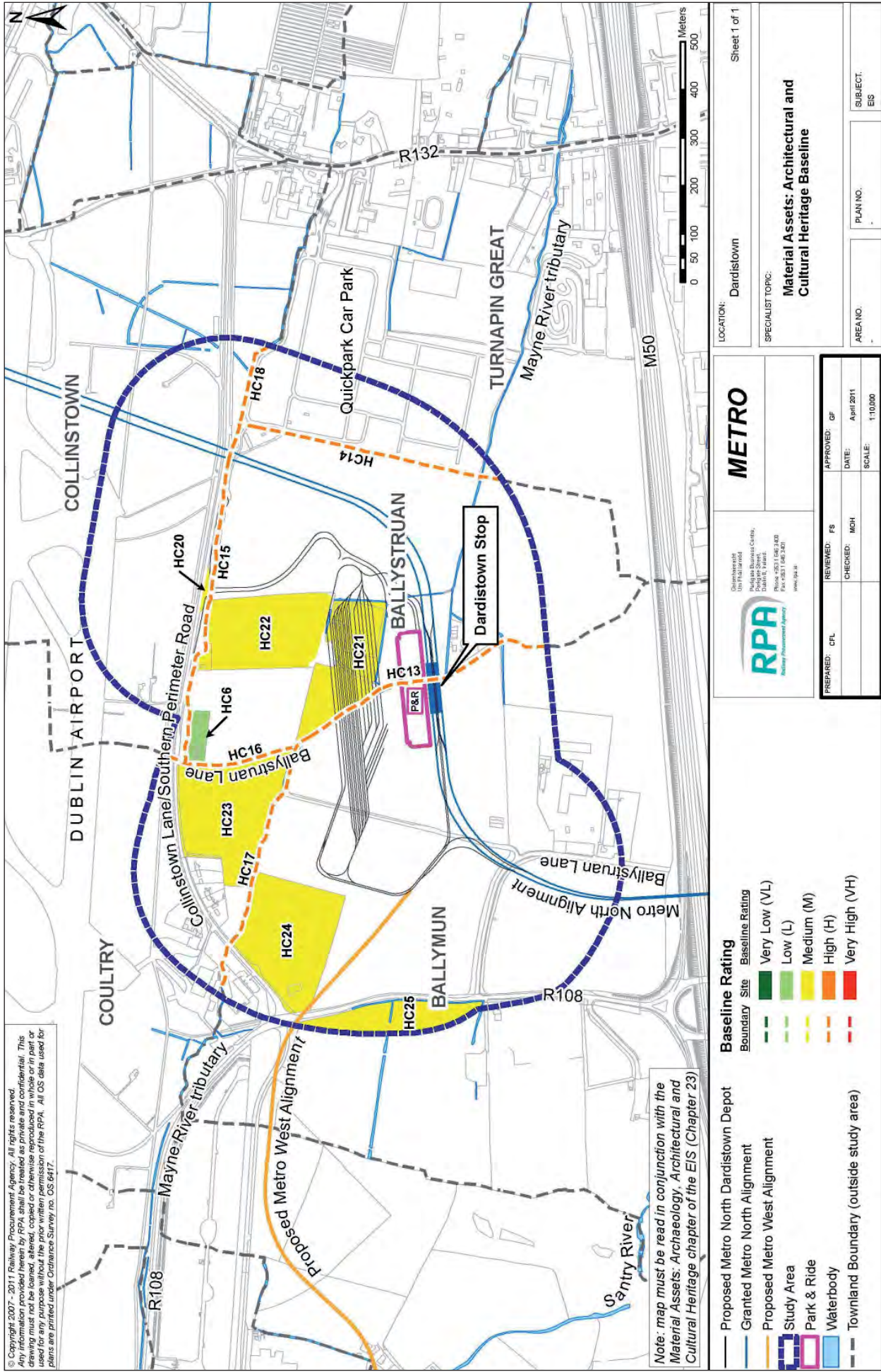
LOCATION: Dardistown

SPECIALIST TOPIC: **Material Assets: Architectural and Cultural Heritage Baseline**

AREA NO. _____ PLAN NO. _____ SUBJECT: EIS

Sheet 1 of 1

Fig. 17: Archaeological Heritage Baseline map for Metro North Depot.



© Copyright 2007 - 2011 Railway Procurement Agency. All rights reserved. Any information provided herein by RPA shall be treated as private and confidential. This drawing must not be loaned, altered, copied or otherwise reproduced in whole or in part or used for any purpose without the prior written permission of the RPA. All OS data used for plans are printed under Ordnance Survey No. OS 0417.

Note: map must be read in conjunction with the Material Assets: Archaeology, Architectural and Cultural Heritage chapter of the EIS (Chapter 23)

		METRO	
Prepared: CTL Reviewed: FS Checked: MOH Approved: GF		Date: April 2011 Scale: 1:10,000	
Location: Dardistown		Specialist Topic: Material Assets: Architectural and Cultural Heritage Baseline	
Area No.:		Subject: EIS	
Plan No.:		Sheet 1 of 1	

Fig. 18: Architectural and Cultural Heritage baseline map for Metro North Depot.



Fig. 19: Metro West geotechnical trial pit and borehole locations.

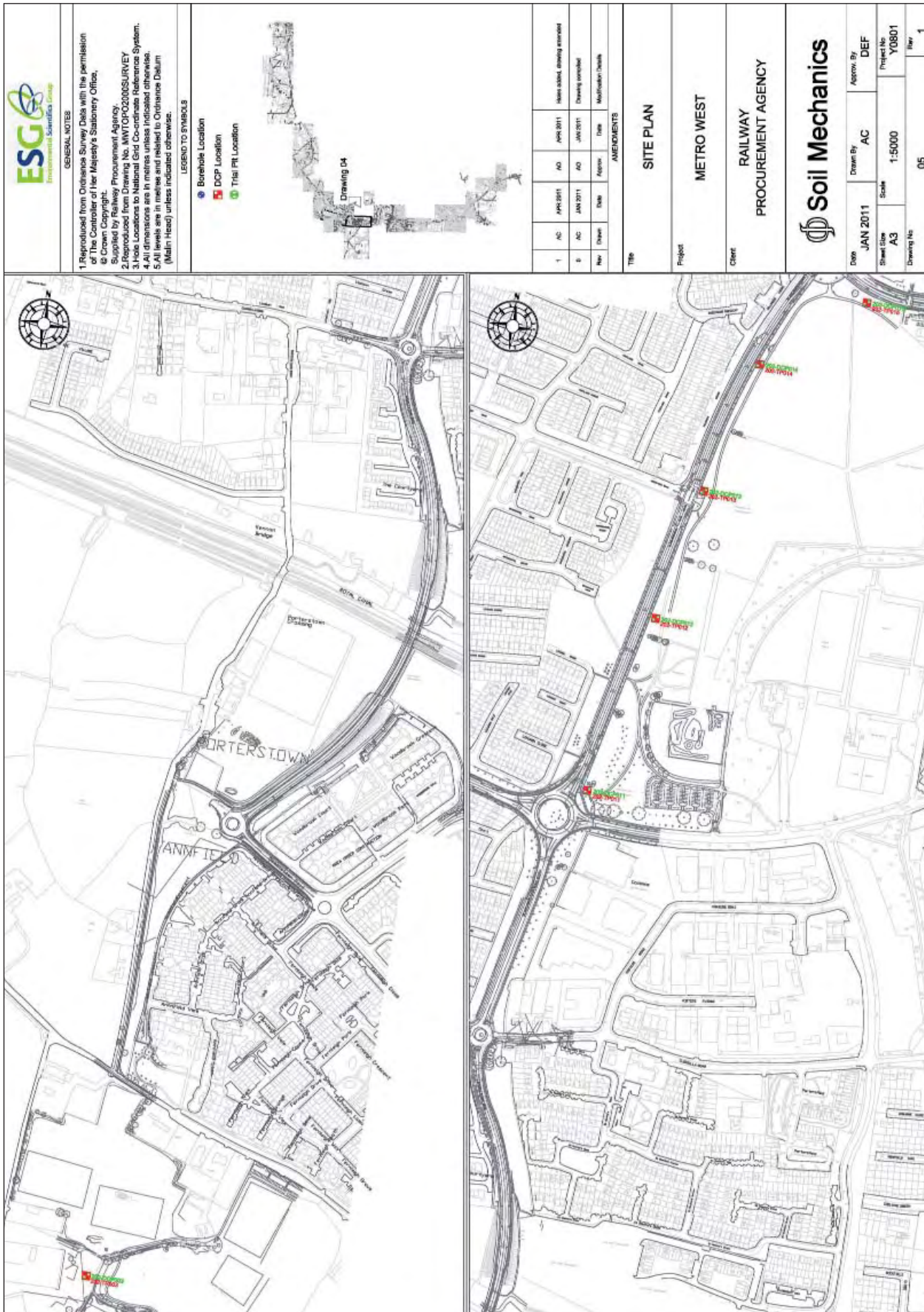


Fig. 20: Metro West geotechnical trial pit and borehole locations.



Fig. 21: Metro West geotechnical trial pit and borehole locations.

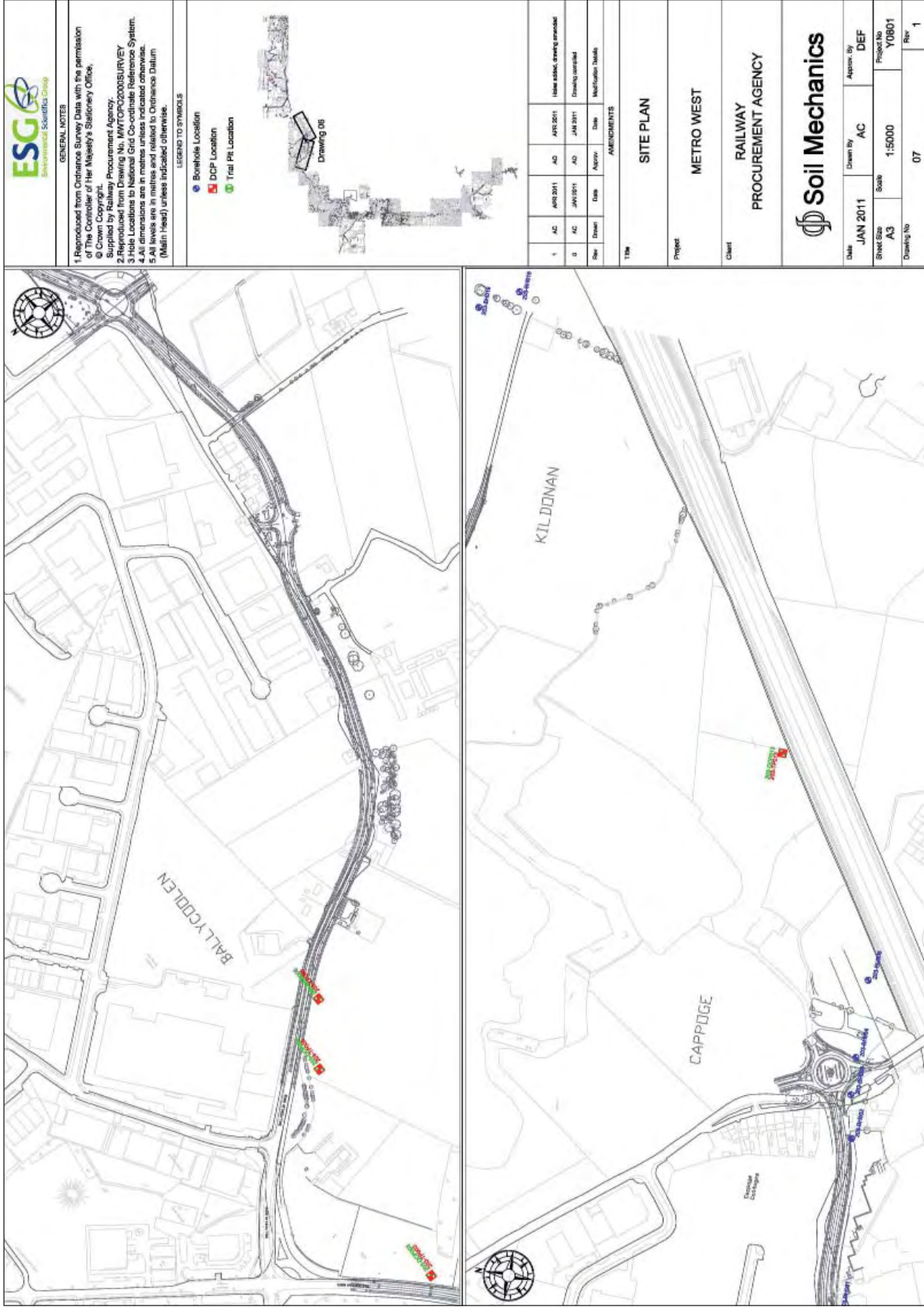


Fig. 22: Metro West geotechnical trial pit and borehole locations.



Fig. 23: Metro West geotechnical trial pit and borehole locations.

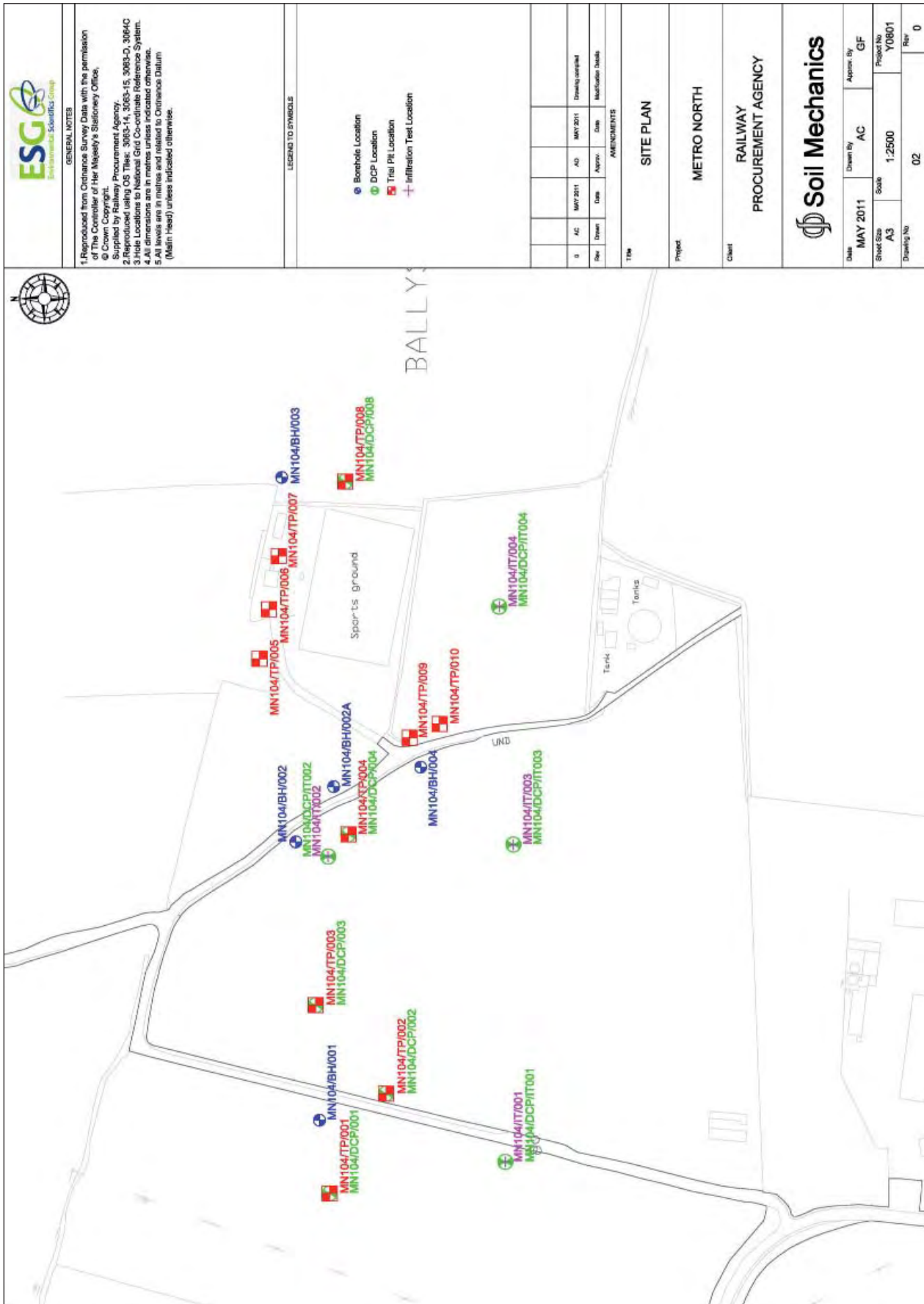


Fig. 24: Metro North Dardinstown Depot geotechnical trial pit and borehole locations.



Plate 1: MW/201/BH/010.



Plate 2: MW/201/TP/018.



Plate 3: MW/201/TP/016.



Plate 4: MW/202/TP/011.



Plate 5: MW/202/TP/012.



Plate 6: MW/202/TP/013.



Plate 7: MW/202/TP/014.



Plate 8: MW/202/TP/015.



Plate 9: MW/202/BH/010.



Plate 10: MW/202/BH/011.



Plate 11: MW/202/BH/012.



Plate 12: MW/202/BH/014.



Plate 13: MW202/TP/021.



Plate 14: MW/203/TP/003.



Plate 15: MW/203/BH/001.



Plate 16: MW/203/BH/005.



Plate 17: MW/203/BH/009.



Plate 18: MW/203/BH/014.



Plate 19: MW/203/BH/015.