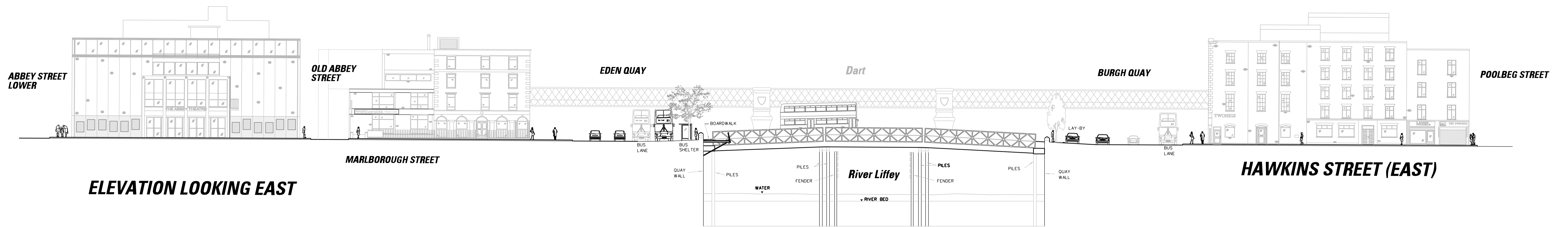
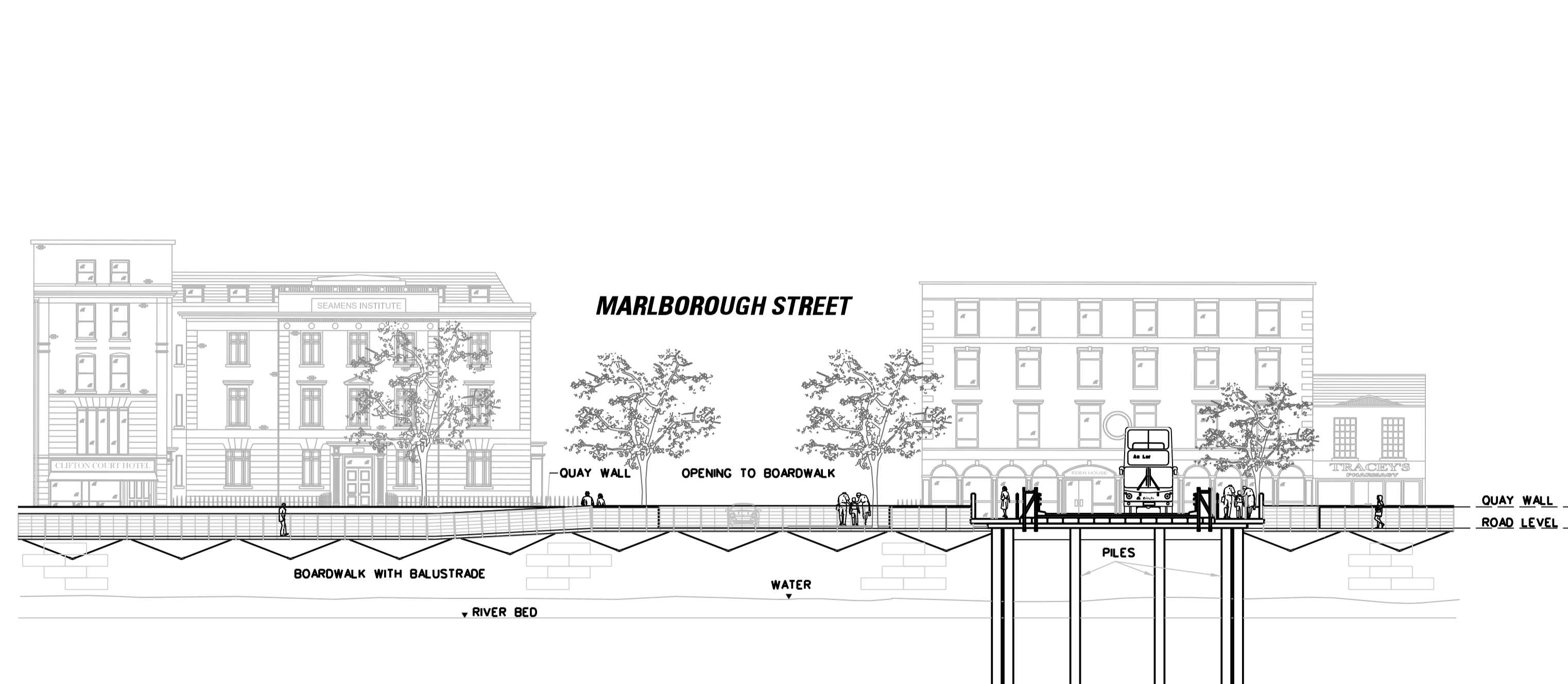


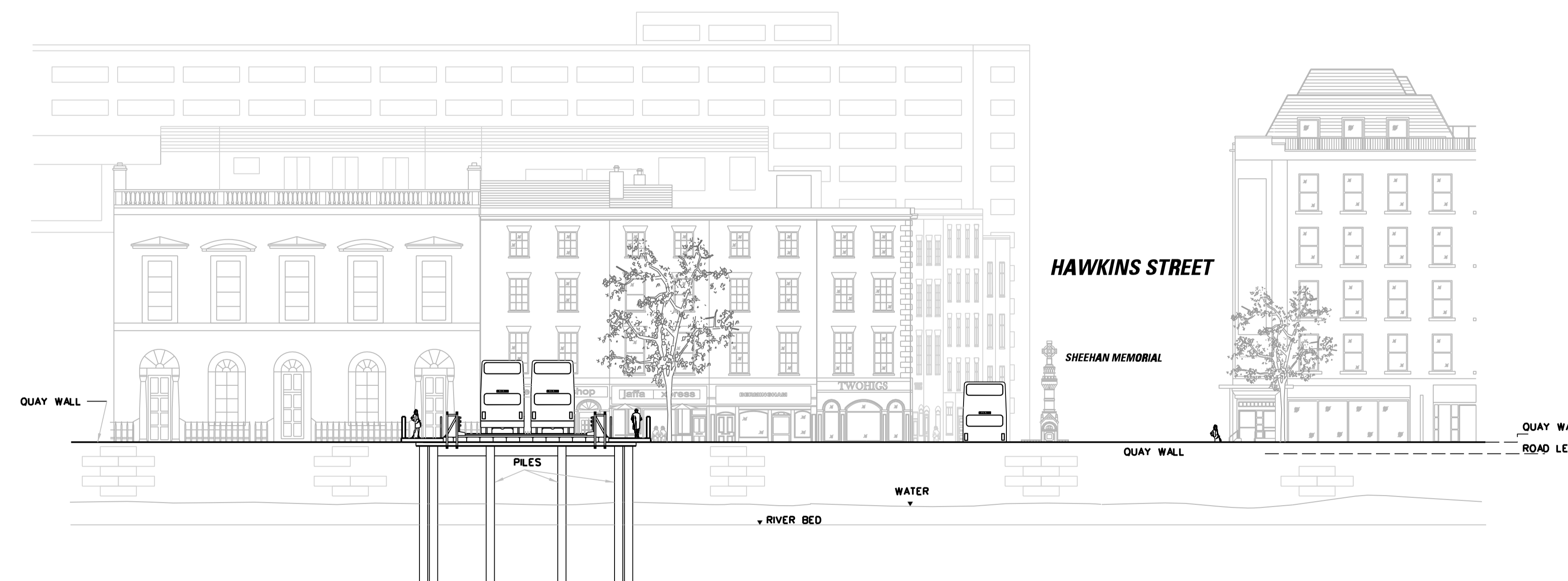
ELEVATION LOOKING WEST



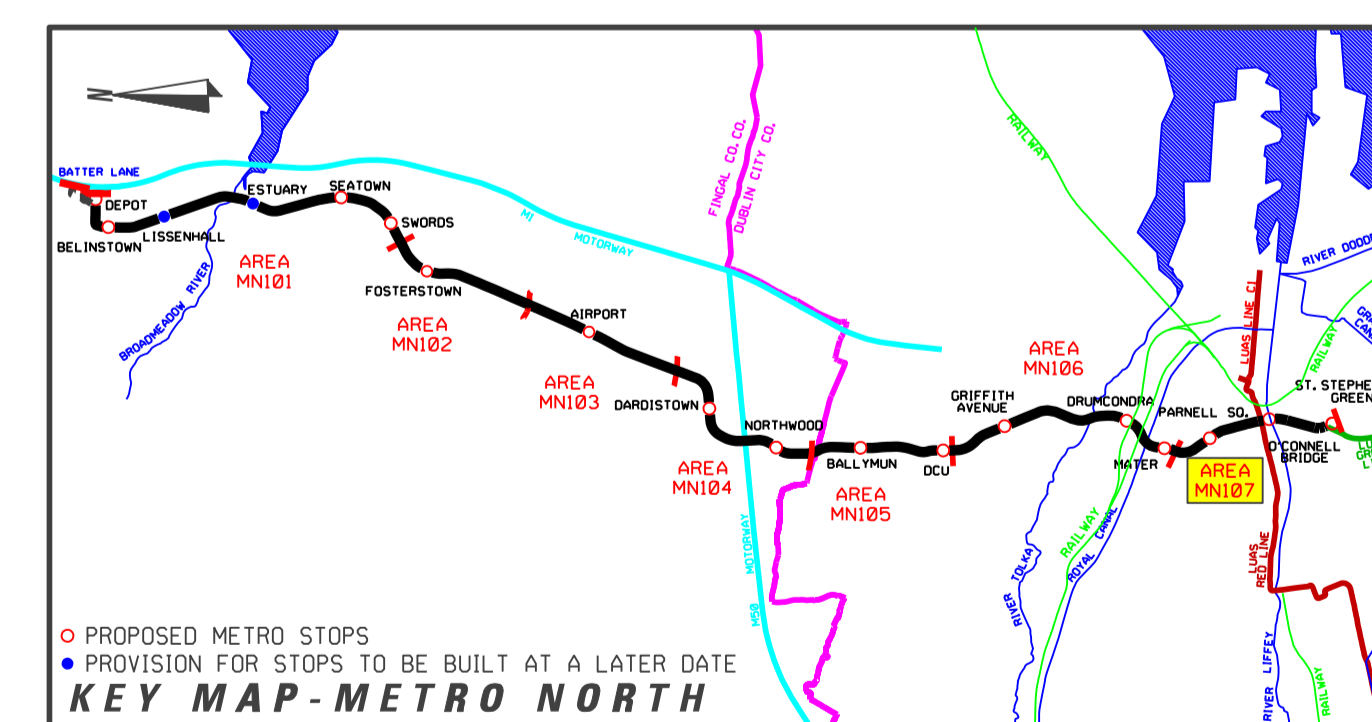
ELEVATION LOOKING EAST



EDEN QUAY SECTION A-A



BURGH QUAY SECTION B-B



KEY MAP - METRO NORTH

REVISION	DATE	MODIFICATION	STATUS	CHECKED/APPROVED



TITLE:
**RAILWAY WORKS
LINE MN - STRUCTURES
BAILEY BRIDGE ELEVATIONS**

PREPARED: RPA OFFICE	CHECKED: GEOFFREY FEATHERSTONE
SCALE: 1:200	APPROVED: RORY O'CONNOR
DATE: AUGUST 2008	

AREA NO: 107	PLAN NO: MN-BR 107 B-C2	SUBJECT: RAIL ORDER
------------------------	-----------------------------------	-------------------------------

REFERENCE RELATED DRAWINGS
FOR 1:500 PLAN DRAWING SEE
RAIL ORDER PLAN No.
MN-RO 107 B-C (L/MN/000/GA/107003A) AND ALSO SEE
BAILEY BRIDGE PLAN AND LOCATION MAP
MN-BR 107 B-C1 (L/MN/000/BS/107001A)

Copyright Railway Procurement Agency
This drawing is confidential and the copyright is reserved by the RPA. This drawing must not be either issued,
copied or otherwise reproduced or copied in any form or used for any purpose without the prior permission of the RPA.
All U.S. data used for plans is generated from U.S. digitalized maps and are printed under Ordnance Survey patent no. 0.5.8817

INTERNAL DOCUMENT NUMBER	STAGE	LINE	CONTRACT	ELEMENT	DPW NO	DPW REV
	L	MN	000	BS	107002	A