



**An Roinn Iompair**  
Department of Transport

# Emergency Preparedness

Eileen Tully  
Principal Officer, Emergency Planning Division

17 October 2023



## Our Vision

*The people and places of Ireland, sustainably connected with each other and the world.*



## Our Mission

*To deliver an accessible, efficient, safe and sustainable transport system that supports communities, households and businesses.*



## Bodies under the aegis of the Department of Transport

### COMMERCIAL BODIES

|    | Body            |                             |
|----|-----------------|-----------------------------|
| 1  | CIÉ             | Coras Iompair Éireann       |
| 2  | Bus Átha Cliath | Bus Átha Cliath             |
| 3  | BÉ              | Bus Éireann                 |
| 4  | daa plc         | Dublin Airport Authority    |
| 5  | DPC             | Dublin Port Company         |
| 6  | IÉ              | Iarnród Éireann             |
| 7  | IAA             | Irish Aviation Authority    |
| 8  | ANI             | AirNav Ireland              |
| 9  | PoC             | Port of Cork Company        |
| 10 | PoW             | Port of Waterford Company   |
| 11 | SFPC            | Shannon Foynes Port Company |
| 12 | TSAG            | The Shannon Airport Group   |



## NON-COMMERCIAL BODIES

|   | Body | Name                                |
|---|------|-------------------------------------|
| 1 | CRR  | Commission for Railway Regulation   |
| 2 | CIL  | Commissioner of Irish Lights        |
| 3 | MCIB | Marine Casualty Investigation Board |
| 4 | MBRS | Medical Bureau of Road Safety       |
| 5 | NTA  | National Transport Authority        |
| 6 | RSA  | Road Safety Authority               |
| 7 | TII  | Transport Infrastructure Ireland    |



## Strategic Goal 2:

### Sustainability: Economy, Environment and Society

Ensuring that our transport system is integrated, resilient and decarbonised in a manner that is environmentally, economically and socially sustainable.

Enhance our preparedness to respond to emergencies including as a lead government Department.

Stand ready as lead government Department in responding to emergencies across scenarios identified in the Strategic Emergency Management National Structures and Framework.



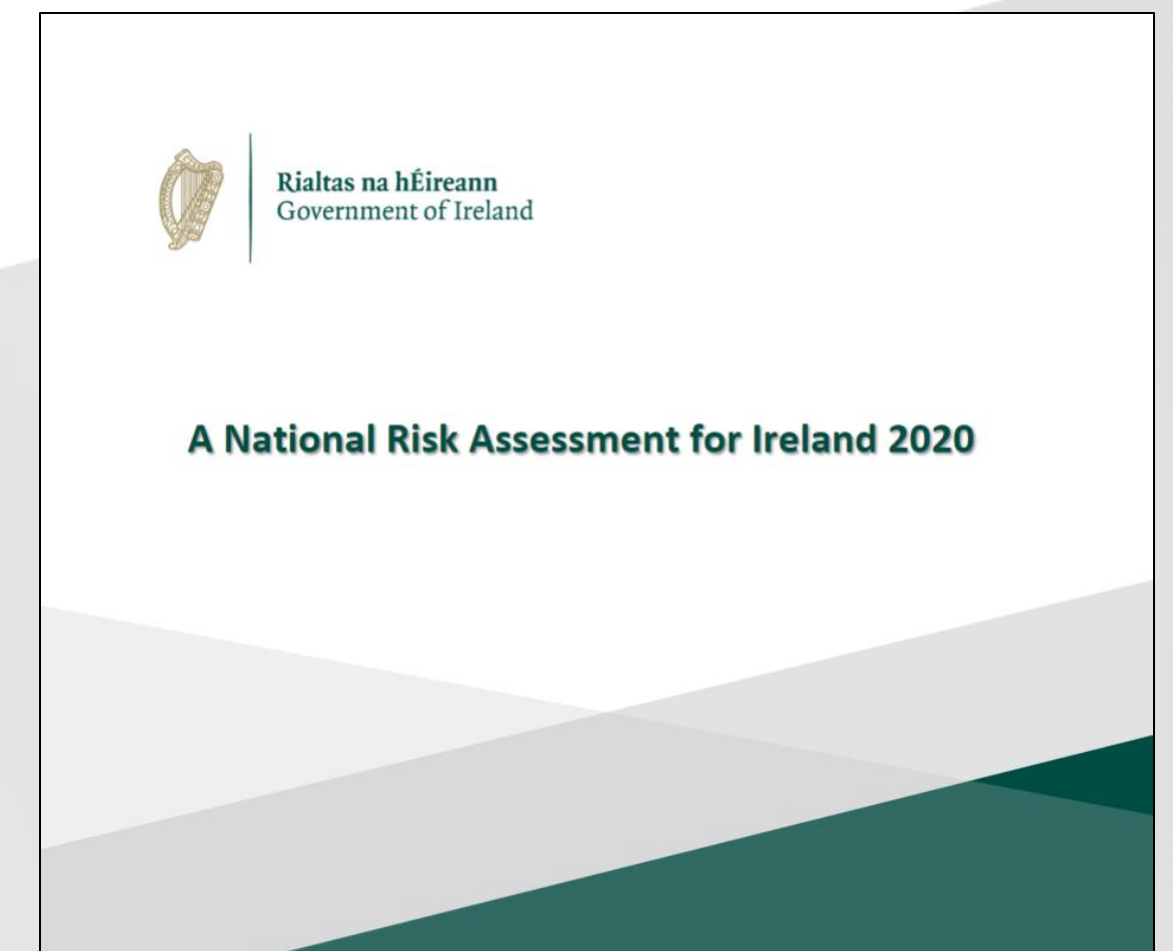
# National Structures to deliver a 'whole of government' emergency response

# Government Task Force (GTF) on Emergency Planning

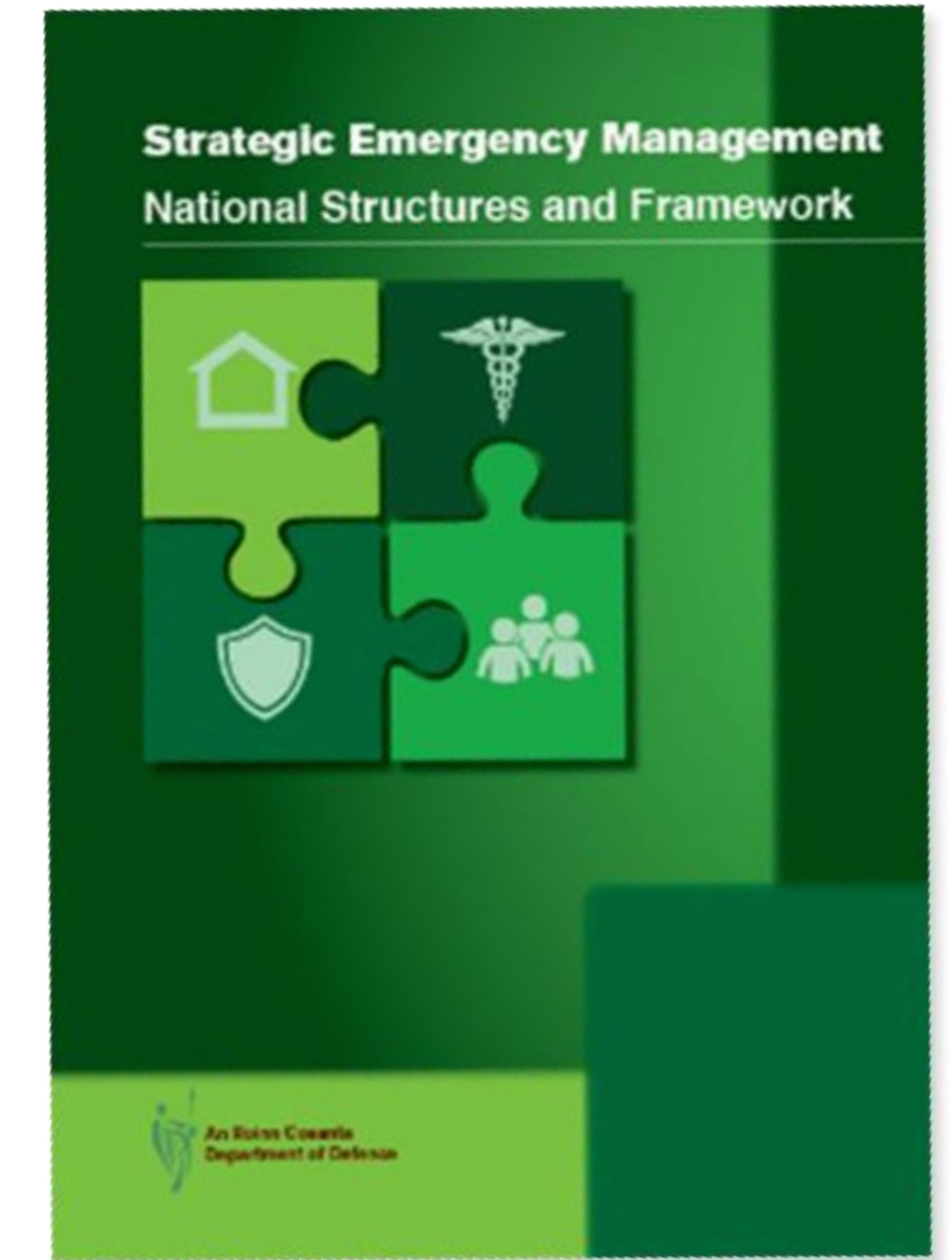
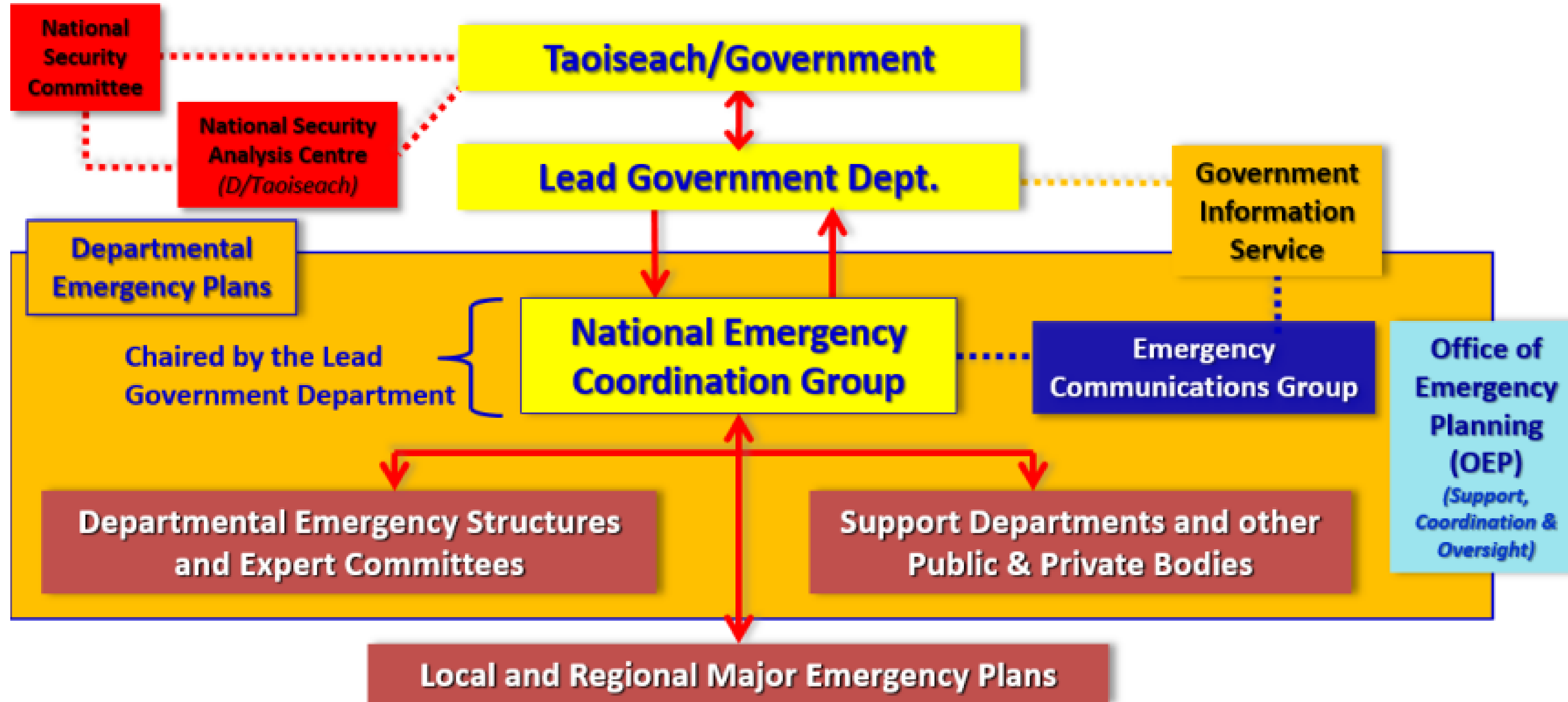


- Chaired by Minister for Defence
- Senior representatives of all Departments and Agencies
- Coordinates and oversees the emergency management policy and activities
- Political Leadership & Governance of Strategic Emergency Management
- Provides support for the policy initiatives of the Minister
- “Whole of Government”
- Platform for the shared of experience and best practices
- Networking and Coordination
- Horizon Scanning

Critical Entities  
Directive  
2022



# National Strategic Structures and Linkages in an Emergency



**NECG Chair:** Minister/Senior Official from LGD

**Role:** Coordinate and manage a “whole of government”, national-level response to an emergency situation



# Role of the NECG in emergency/crisis response



- Gathers information, evaluates situation & identifies key issues
- Coordinates National-level responses/resources
- Ensures dissemination and communication of information (particularly public safety messages)
- Sets objectives and priorities to support responses
- Decides on efficient allocation of available resources
- May seek additional resources, if required
- Makes recommendations to Government and Ministers
- Conducts post emergency reviews



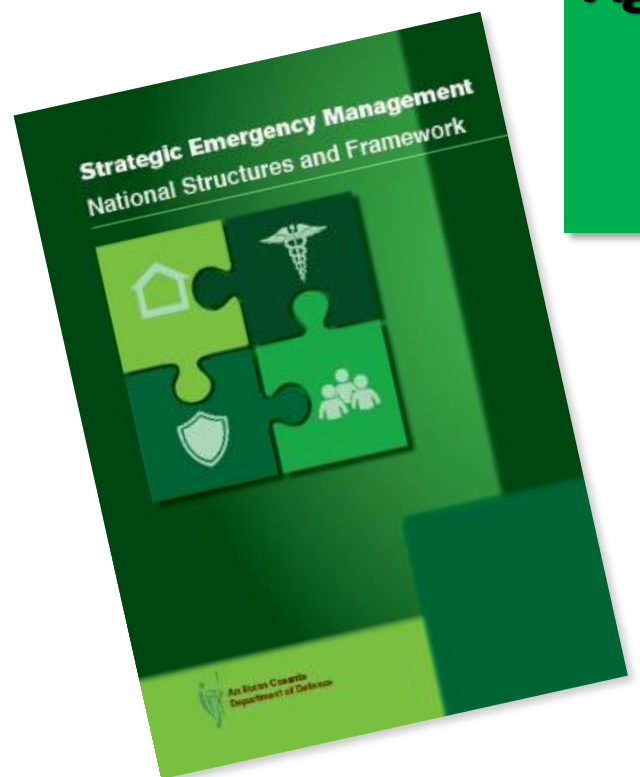
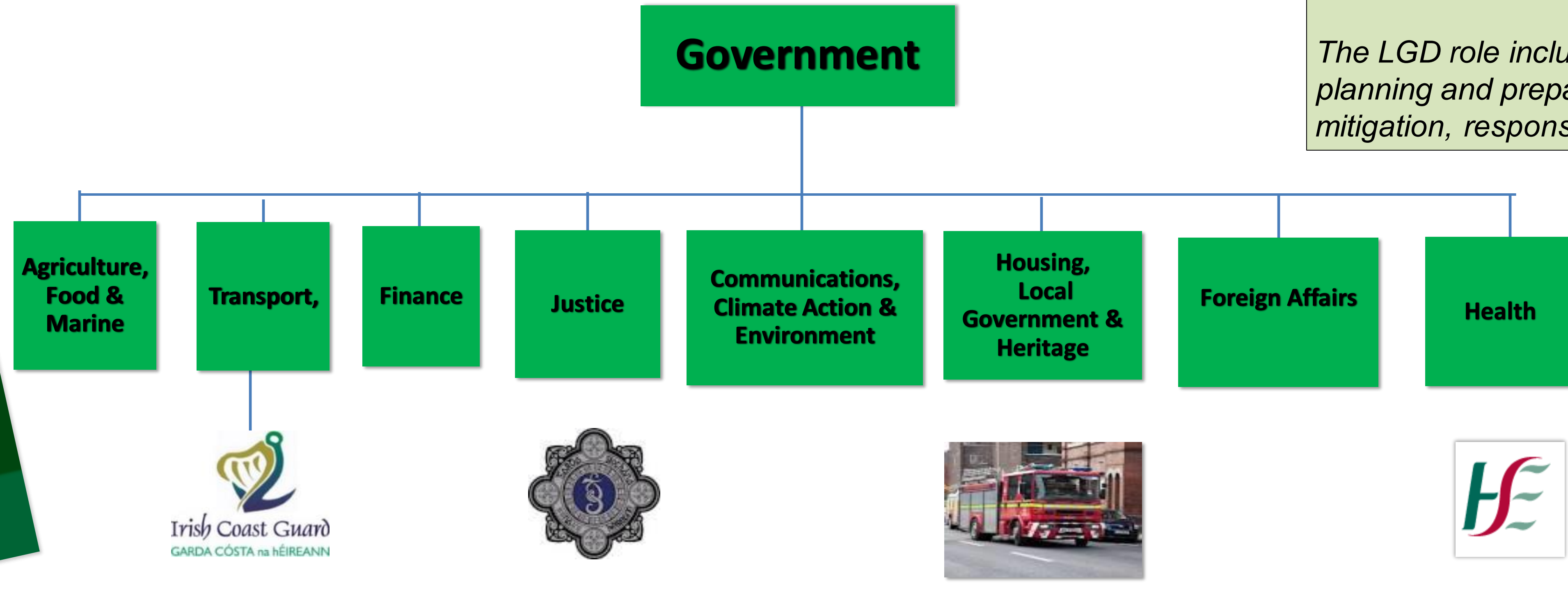


# SEM - Lead Government Departments

**SEM Annex A Identifies Leads for 50 Major Emergency Incident Types**

*“The Lead Government Department has the mandate and responsibility to coordinate all national level activity for its assigned emergency types.”*

*The LGD role includes risk assessment, planning and preparedness, prevention, mitigation, response, and recovery.”*



*SEM also identifies ‘principal support departments’ for individual scenarios*



# D. Transport as Lead Government Department (LGD)

## D. Transport Emergency Levels



- Level 1** A 'routine' emergency managed at local level by the affected agency/division
- Level 2** Emergency/potential emergency under the remit of the department or of a transport agency requiring ministerial response and significant departmental coordination to support an effective response and early recovery.
- Level 3** Emergency in the transport sector which is of a scale that requires a 'whole of government' response (NECG convened)

# SEM - Transport Lead Govt Dept Scenarios (x 16)



|  |   |
|--|---|
| <b>Aircraft Accident</b>   | <b>Ferry and Other Shipping Incidents</b>               |
| <b>Volcanic eruptions impacting on Air Travel.</b>               | <b>Disruptive Industrial Action Transport Sector</b>    |
| <b>Aviation Security / Terrorist Incident</b>                    | <b>Environmental Pollution (at sea):</b>                |
| <b>Emergency Incidents at Airports</b>                           | <b>Marine Search and Rescue</b>                         |
| <b>Railway Accident</b>  | <b>Marine Emerg. Impacting Onshore</b>                  |
| <b>Major Accident on National Roads<br/>/Tunnels/Bridges etc</b> | <b>Marine Emerg. Impacting Offshore</b>                 |
| <b>Major Accident Local/Regional Rd.</b>                         | <b>Marine and Coast Pollution</b>                       |
| <b>Major Incident at Transport Hub</b>                           | <b>Incidents involving Hazardous materials (at sea)</b> |

## Principal Support Dept Scenarios

|                                    |  |
|------------------------------------|--|
| <b>Oil Supply/Energy Emergency</b> | <b>Hazardous Materials Incident</b>            |
| <b>Nuclear Incident</b>            | <b>Severe Weather (with DHLG&amp;H is LGD)</b> |



## Potential NECG Triggers

Emergency on a scale that requires coordinated multi agency national level response.

Public interest demands national level response

National/international assistance is required from outside remit of LGD and/or response agencies

Other circumstances as may be identified by Government/LGD

Anticipated emergency is of such gravity as to require national coordination

## **D. Transport as Support Government Department for Severe Weather/Energy Emergency etc**

Ongoing consultation with Transport Subgroup

- TII
- NTA/ Public Transport Operators
- Regional Roads Div.
- LGMA
- Airports
- Ports
- D. Education (school transport)

Ireland

## **Weather warning extended to Friday as emergency group meets over cold snap**

There is 'no expectation' of power blackouts, Minister says, as temperatures to drop below -5 degrees

 [Expand](#)



Irish Times – Sun Dec. 11 2022

# Be Winter Ready Launch – Tomorrow Oct 18



## Be Winter Ready



[Health Advice](#)



[Schools and Early Learning and Childcare](#)



[Road Safety and Travelling Abroad](#)



[Weather Warnings and Flooding](#)



[Businesses and Farm Safety](#)



[The Home and Community](#)



**Be Winter-Ready**  
**ROAD SAFETY**  
**Plan, Prepare, Be Aware**





# Thank You